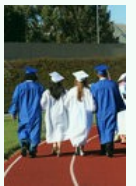




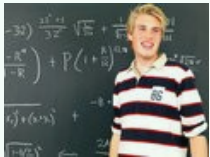
Truckee Meadows Community College ~ University of Nevada, Reno ~ Washoe County School District



Washoe K-16 Data Profile



WCSD Graduates Attending UNR and TMCC in 2007-2008



Prepared By:

The Education Alliance of Washoe County
Joint Data Profile Committee

December 2008

This page intentionally left blank.

DATA PROFILE COMMITTEE

Washoe County School District

Paul LaMarca
Assistant Superintendent, Public Policy, Accountability & Assessment

Steve Hull
Assistant Superintendent, Public Affairs

Jan Hall
Data Analyst, Public Policy, Accountability & Assessment

Lori Lotts
Data Assistant, Public Policy, Accountability & Assessment

University of Nevada, Reno

Bill Cathey
Vice Provost, Instruction and Undergraduate Programs

Melisa Choroszy
Associate Vice President for Records/Enrollment

Serge Herzog
Director of Institutional Analysis

John Mahaffy
Director of Assessment

Truckee Meadows Community College

Elena Bubnova
Director of Institutional Research

Nevada System of Higher Education

Linda Heiss
Director of Institutional Research

The Education Alliance of Washoe County

Denise Hedrick
Executive Director

Ginny Jackson
Past President and member of the Board of Directors

Anne Loring
Advocacy Committee

ACKNOWLEDGMENTS

The preparation of this report was made possible through the special assistance of:

Washoe County School District
Public Policy, Accountability & Assessment

Jennifer Todd
Program Services Coordinator

Jim Grace
Reporting Specialist

Jennifer Kimball
Program Services Technician

University of Nevada, Reno
Office of Institutional Analysis

Arthur Chenin
Institutional Research Analyst

Truckee Meadows Community College
Office of Institutional Research

Jason Oetjen
Research Analyst

DATA PROFILE PARTICIPANTS

Academy of Arts, Careers & Technology**

Damonte Ranch

Galena

Gerlach

Hug

Incline

McQueen

North Valleys

Reed

Reno

Spanish Springs

Sparks

TMCC HS

Washoe

Wooster

WCSD High Schools*

Nevada System of Higher Education

University of Nevada, Reno

Truckee Meadows Community College

* Data are limited for high schools that opened after the initial year of this project: North Valleys (2001-02), Spanish Springs (2001-02), Damonte Ranch (2003-4) and Academy of Arts, Careers & Technology (2005-06).

** Beginning with the 2008-2009 school year, Regional Technical Institute will now be called the Academy of Arts, Careers & Technology.

INTRODUCTION

1998 - First Edition

- ∞ Tracked and analyzed data from the 1997 WCSD graduating cohort
- ∞ Established baseline data
- ∞ Compared district trends with state and national trends

2002

- ∞ Reported eye-opening statistics on the English and math remediation needs of WCSD graduates attending UNR and TMCC

2006

- ∞ Added analyses of college admissions and college success of WCSD graduates from 1997 to 2005

2007 - Tenth Edition

- ∞ Reviewed and compared six high school graduation rate formulas
- ∞ Reported the results of a comprehensive cohort analysis of high school graduation rates for the WCSD 2002-2003 freshman cohort

2008

- ∞ Continues to report the Cohort Graduation Rate introduced in the 2007 edition.

For the past eleven years, the Washoe County School District, Truckee Meadows Community College and the University of Nevada, Reno have worked in concert through the Education Alliance of Washoe County to produce the Washoe K-16 Data Profile, formerly called the High School Data Profile. The Nevada Department of Education and the Nevada System of Higher Education have also participated in this effort. The Data Profile is the collection and presentation of data about Washoe County School District high school students and their matriculation into college, with special emphasis on the graduates who attend the University of Nevada, Reno and Truckee Meadows Community College. Through this effort, we hope to identify factors that can increase the success of our students as they proceed from high school to post-secondary education.

The Data Profile has expanded in scope each year. The 2002 edition reported a two-year increasing trend in the percentage of Washoe County School District graduates enrolled in remedial English and/or mathematics courses at both UNR and TMCC. Concern about this trend and its potential impact on students led to an increased focus on the remediation issue for the 2003 through 2005 editions of the Data Profile. The 2006 edition included college success data for the first and second cohorts tracked by the Data Profile, the WCSD 1997 and 1998 graduating classes. The tenth anniversary edition added a comparison of methods used to calculate high school graduation rates and reported the rates produced by each method for the WCSD Class of 2006. The 2008 edition continues reporting of the Cohort Graduation Rate introduced last year.

The Education Alliance of Washoe County hopes that this and future issues of the Data Profile will continue to help educators, parents, students, and our community better prepare our graduates for a successful transition into higher education and for continued success throughout their college careers.

WASHOE K-16 DATA PROFILE 2008

Annual Report Contents

Summary	Trends in 2006-2007 Data	Pages 1 - 2
High School Measures	Graduation Rates	3 - 7
	Non-Graduates	8
	College Entrance Exams	9 - 20
	Enrollment in Higher Level Courses	22 - 27
	Millennium Scholarships	28
College Measures	College Going Rates	30 - 31
	Capture Rates	32 - 37
	Remediation	39 - 45
	Persistence Rates	46 - 49
	UNR College Entrance Exams	50 - 53
College Success	Overall College Graduation Rates	54

SUMMARY OF DATA TRENDS

WCSD Graduates Including the Class of 2007

High School Trends

WCSD has calculated a cohort high school graduation rate for the Classes of 2006, 2007 and 2008 – 57%, 55% and 56% respectively. This is a longitudinal, student-level graduation rate, which uses a different calculation method than that used for the Nevada Department of Education annual graduation reports.

Asian and Caucasian students graduated at much higher rates than American Indian, Hispanic, and African American students.

ACT participation has gradually dropped from a high of 52% in 1994, to 37% in 2007. SAT participation, which hovered in the low 30% range between 2001 and 2004, reached a peak in 2007, with 46% of the Class of 2007 taking the SAT.

Since 1998, average ACT and SAT scores for WCSD graduates have remained above state and national averages.

Under the recently instituted *Gateway curriculum* requirements, 43% of 2007 graduates earned math credits in high level math courses (i.e. beyond Algebra 3-4), compared to only 36% of 2006 graduates. The *Gateway curriculum* becomes mandatory for the Class of 2010.

The percentage of students enrolled in Advanced Placement (AP) and International Baccalaureate (IB) courses has doubled in the last 10 years from 15% in 1998 to 30% in 2007.

College Trends

The college-going rate for 2007 WCSD graduates remained steady compared to 2006, at slightly more than 70%, which is higher than the statewide rate.

The percentage of WCSD 2007 graduates enrolling in UNR (28%) was slightly less than in 2006 (30%). WCSD graduate enrollment in TMCC has remained steady at 25% for 2005 through 2007.

While the need for remediation is down slightly at UNR, it is up slightly at TMCC in 2007. However, WCSD graduates' enrollment in remedial classes at TMCC and UNR remains above the remedial enrollment averages for Nevada high schools overall.

Persistence rates of WCSD graduates at TMCC and UNR have remained steady over the past seven years. Approximately 70% of WCSD graduates attending TMCC return after one semester, and about 60% return after two semesters. Approximately 90% of WCSD graduates attending UNR return after one semester, and about 80% return after two semesters.

SUMMARY OF DATA TRENDS (cont.)

WCSD Graduates Including the Class of 2007

College Success Trends: WCSD Graduates

Class of 1997: 28% have earned a college degree; 21% earned a Bachelor's degree or higher.

Class of 1998: 28% have earned a college degree; 22% earned a Bachelor's degree or higher.

Class of 1999: 26% have earned a college degree; 21% earned a Bachelor's degree or higher.

Class of 2000: 38% have earned a college degree; 26% earned a Bachelor's degree or higher.

Recommendations for Future Work

Continue reporting the cohort graduation rate and the associated credit-deficient and drop-out rates.

Investigate factors that contribute to a student's failure to graduate from high school.

Continue to examine Washoe County data at the four key transition points from high school to completion of a college degree: high school graduation rate, college-going rate, persistence rate after two college semesters, college graduation rate.

Continue to disaggregate selective data sets by student ethnicity.

Continue to improve the capability to identify factors that promote or retard student success in higher education.

COHORT GRADUATION RATE VS. STATE GRADUATION RATE

Graduation Rate Calculations: *Cohort Rate* Versus *Leaver Rate*

As described in detail in the 2007 edition of the *Washoe K-16 Data Profile*, researchers have used many different methods to measure high school graduation rates. Some methods attempt to estimate the percentage of a freshman class that graduates four years later. Others measure some other aspect of graduation. The various formulas yield disparate results and often describe very different relationships.

Currently, the method known as the *Leaver Rate* is used to produce the official graduation rate reported by the Nevada Department of Education. The *Leaver Rate* measures the percentage of students in a given senior class who leave school as graduates – that is, leave school with a standard, advanced, or honors diploma. The *Leaver Rate* answers the question, “Of those students who officially leave, how many leave by graduating?” The majority of states, including Nevada, have used the *Leaver Rate* to produce the graduation rate used for Federal accountability reporting required by the No Child Left Behind act. Graduation rates produced by the *Leaver Rate* method are typically higher than graduation rates calculated by other methods.

The Class of 2007 graduation rate, as calculated using the *Leaver Rate* formula, was **77.9%** for WCSD and **67.4%** for the state of Nevada.

In 2005, the National Governors Association (NGA) developed a formula for calculating a longitudinal cohort high school graduation rate that determines the percentage of first-time freshmen and transfer-in students who ultimately graduate with a regular diploma within four years. The Education Alliance of Washoe County (formerly the Education Collaborative of Washoe County) initiated WCSD’s first attempt to track individual students and produce a cohort graduation rate for the Class of 2006. A detailed report of this endeavor and the results were published in the 2007 edition of the *Washoe K-16 Data Profile*. (In that report, the method was referred to as the *EC/NGA Cohort High School Graduation Rate*. In this report, the name has been shortened to the *Cohort Graduation Rate*.)

The *Cohort Graduation Rate* consists of the longitudinal tracking of individual students in a given freshman class, including transfers in and out of the cohort, over their four years in high school. Expressed as a formula, the *Cohort Graduation Rate* equals:

$$\frac{\text{Number of 4-Year Graduates}}{(\text{1}^{\text{st}}\text{-Time Freshmen}) + (\text{Total Transfers In}) - (\text{Total Transfers Out})}$$

The *Number of 4-Year Graduates* includes students who earned standard, advanced, honors and adult diplomas by August of their fourth year.

1st-Time Freshmen includes 9th graders who transferred in during their freshman year.

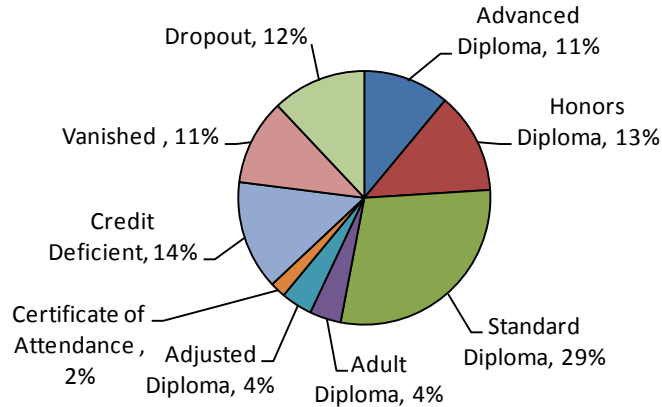
Total Transfers In includes all transfers in that occurred between the cohort’s sophomore and senior years.

Total Transfers Out includes all transfers out that occurred between the cohort’s freshman and senior years.

All high school graduation rates reported in the following pages were calculated using the *Cohort Graduation Rate* method.

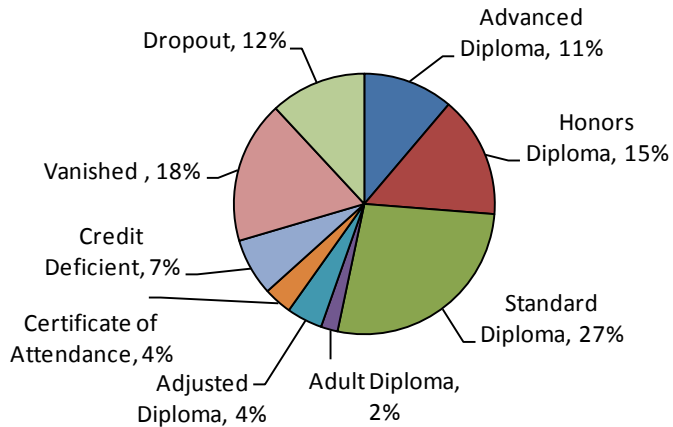
COHORT GRADUATION RATE

Class of 2006 Final Status: DISTRICT *

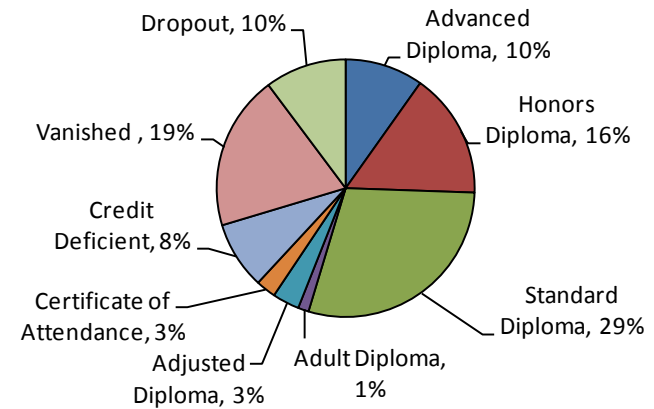


Cohort Graduation Rate	2006	2007	2008
	57%	55%	56%

Class of 2007 Final Status: DISTRICT



Class of 2008 Final Status: DISTRICT



* The 2006 rate has been corrected since the initial report was released.

Note: Changes in the percentages of 'Credit Deficient,' 'Vanished' and 'Dropout' non-graduates across 2006, 2007 and 2008, are primarily a result of data-cleaning refinements (i.e. improvements in the process by which a non-grad's final status is determined). Consequently, they are not attributable to any high school factors, and should not be interpreted as meaningful changes.

COHORT GRADUATION RATE BY HIGH SCHOOL

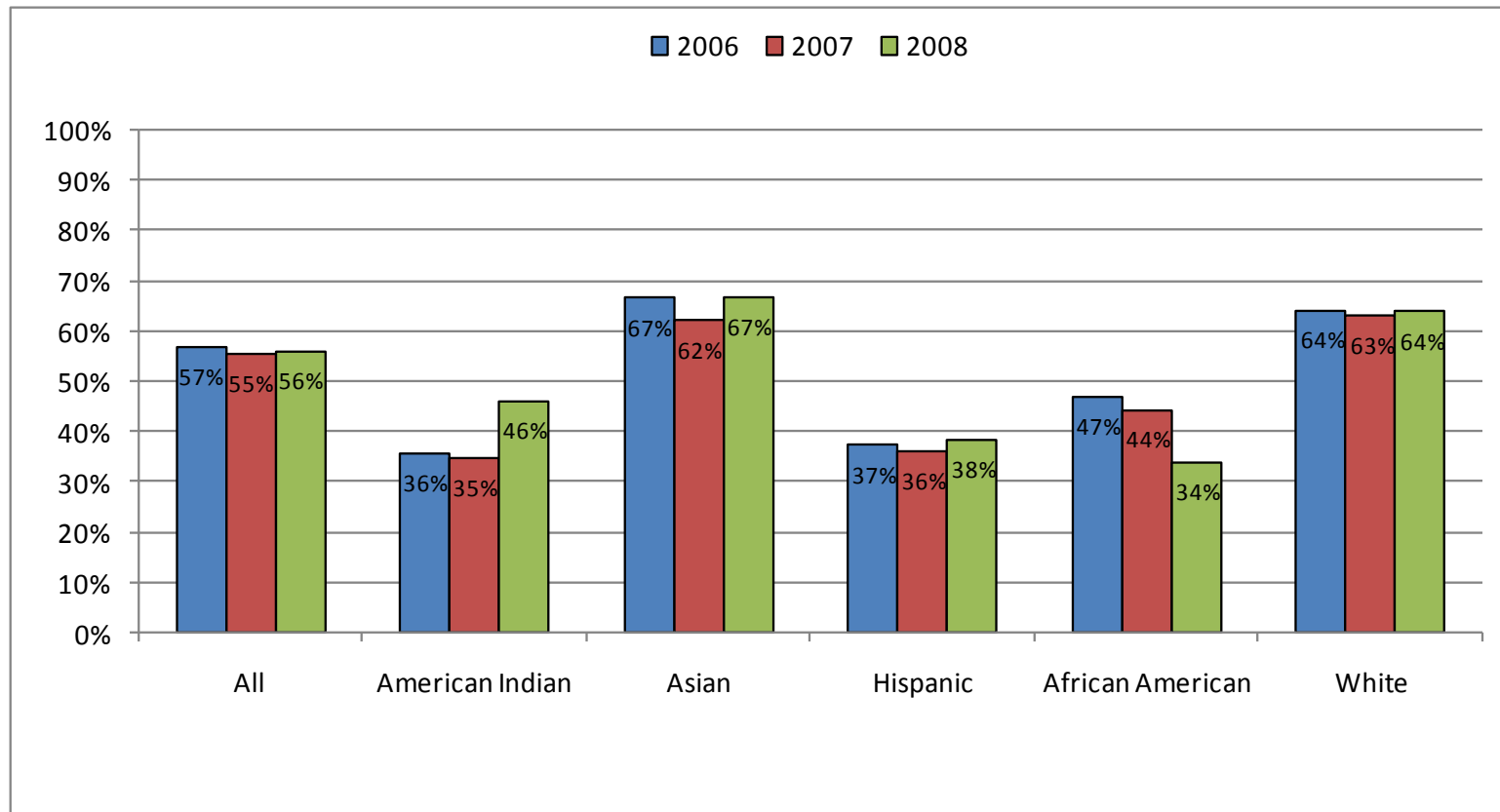
High Schools	2006		2007		2008	
	N	%	N	%	N	%
AACT	26	70%	32	86%	32	74%
Damonte Ranch	106	60%	138	57%	189	61%
Galena	286	75%	295	78%	272	75%
Gerlach	-	-	-	-	-	-
Hug	105	39%	103	39%	128	40%
Incline	71	63%	91	71%	65	66%
McQueen	347	71%	342	76%	349	70%
North Valleys	243	54%	261	55%	260	49%
Reed	361	73%	401	70%	407	65%
Reno	358	80%	383	79%	338	74%
Spanish Springs	300	68%	326	66%	338	63%
Sparks	130	48%	122	50%	126	48%
TMCC HS	90	84%	80	85%	80	86%
Washoe	71	20%	43	12%	64	12%
Wooster	159	57%	158	49%	168	44%
Total*	2815	57%	2874	55%	2922	56%

* District Totals include schools with fewer than 10 students in a population, and are therefore higher than the total of the column percentages.

'-' Denotes too few students to report.

N = number of graduates

COHORT GRADUATION RATE BY ETHNICITY

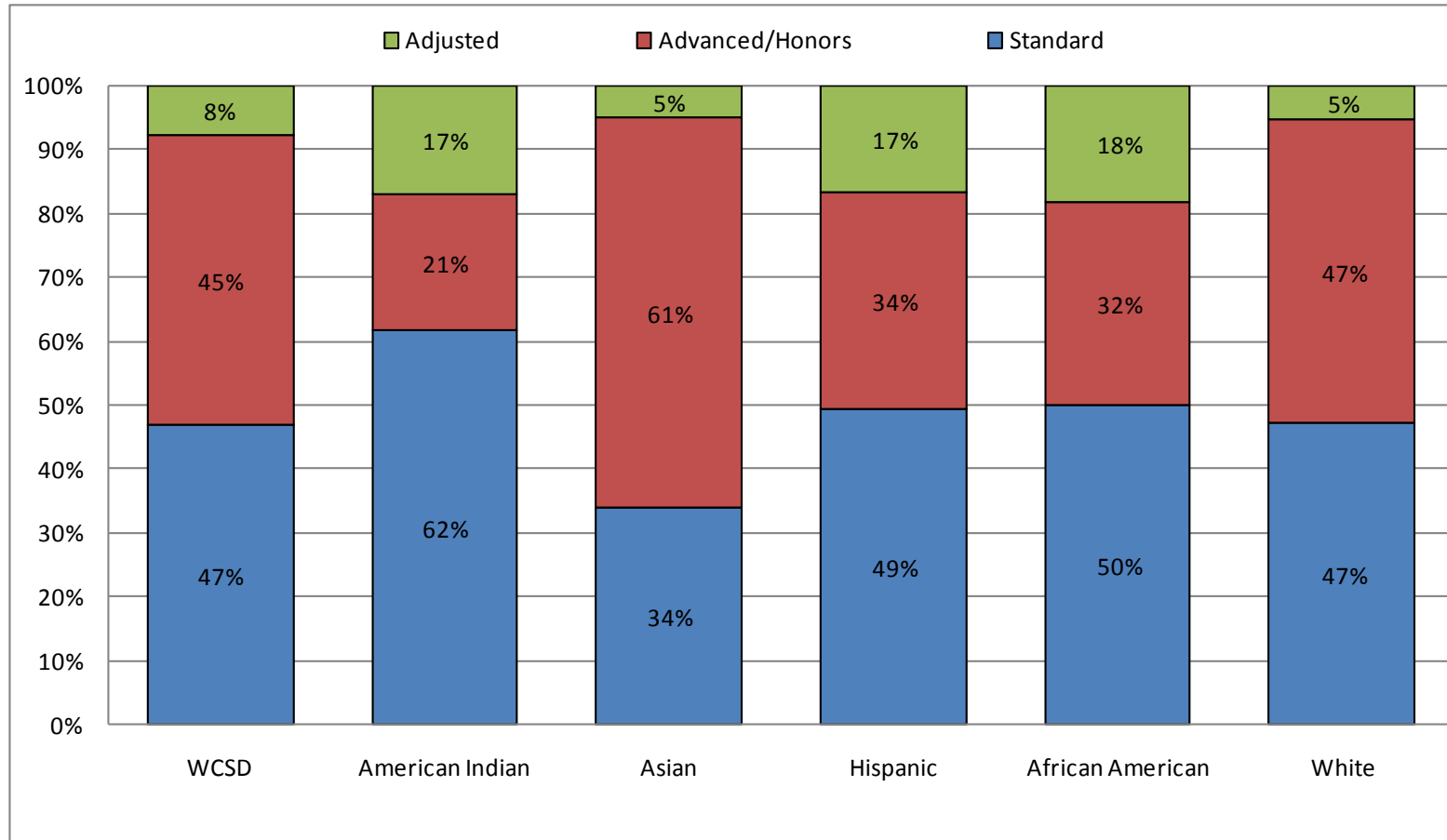


Graduate Counts by Ethnicity

Class of	All	American Indian	Asian	Hispanic	African American	White
2006	2815	45	213	416	87	2054
2007	2874	43	217	430	82	2102
2008	2922	47	238	501	78	2058

TYPE OF DIPLOMA BY ETHNICITY

2007 Graduates



NON-GRADUATES

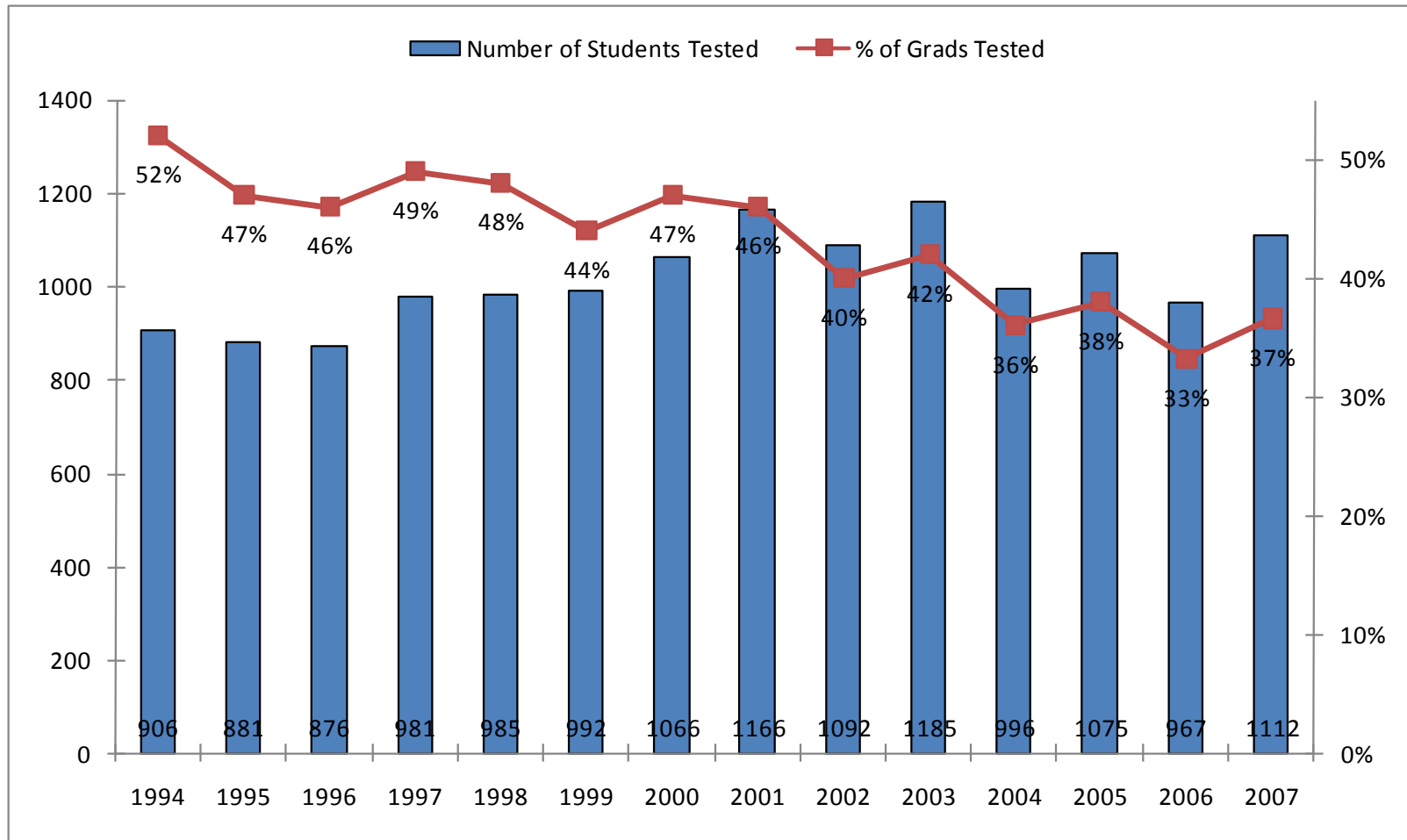
Dropout, Vanished, Credit Deficient

SCHOOL	Class of 2006				Class of 2007				Class of 2008			
	Dropout/Vanished		Credit Deficient		Dropout/Vanished		Credit Deficient		Dropout/Vanished		Credit Deficient	
	N	%	N	%	N	%	N	%	N	%	N	%
AACT	0	0%	7	19%	3	8%	1	3%	7	15%	0	0%
Damonte Ranch	35	16%	26	12%	75	25%	14	5%	79	21%	16	4%
Galena	42	10%	42	10%	51	12%	17	4%	62	16%	16	4%
Gerlach	0	0%	0	0%	2	29%	0	0%	3	27%	0	0%
Hug	64	18%	65	19%	85	25%	24	7%	137	35%	6	2%
Incline	17	13%	15	12%	23	15%	5	3%	24	21%	2	2%
McQueen	56	11%	61	11%	58	12%	27	5%	101	18%	32	6%
North Valleys	118	22%	61	12%	135	23%	40	7%	196	31%	41	7%
Reed	41	7%	58	10%	70	10%	35	5%	140	20%	33	5%
Reno	48	10%	27	5%	58	11%	20	4%	84	16%	16	3%
Spanish Springs	77	15%	41	8%	93	16%	36	6%	131	21%	49	8%
Sparks	47	14%	50	15%	67	22%	24	8%	85	27%	26	8%
Washoe	150	35%	110	25%	237	54%	45	10%	401	62%	57	9%
Wooster	65	19%	31	9%	93	23%	35	9%	142	31%	58	13%
WCSD	1148	23%	611	14%	1534	30%	369	7%	1767	29%	361	8%

COLLEGE ENTRANCE EXAMS

ACT Participation

Number and Percentage of WCSD Graduates Who Took the ACT



COLLEGE ENTRANCE EXAMS

ACT Participation by High School Number and Percentage of WCSD Graduates Who Took the ACT

High Schools	2001		2002		2003		2004		2005		2006		2007	
	N	%	N	%	N	%	N	%	N	%	N	%	N	%
AACT	Not Open	Not Open	Not Open	Not Open	Not Open	Not Open	Not Open	Not Open	Not Open	Not Open	-	-	-	-
Damonte Ranch	Not Open	Not Open	Not Open	Not Open	Not Open	Not Open	Not Open	Not Open	-	-	-	-	-	-
Galena	133	46%	178	46%	183	55%	183	48%	164	52%	165	55%	137	46%
Gerlach	-	-	-	-	-	-	-	-	-	-	-	-	-	-
Hug	92	32%	78	25%	48	24%	34	23%	42	24%	38	28%	47	46%
Incline	31	33%	27	33%	35	42%							39	43%
McQueen	211	57%	228	55%	229	54%	188	49%	159	42%	163	43%	160	47%
North Valleys	Not Open	Not Open	Not Open	Not Open	103	45%	101	41%	95	35%	73	27%	83	32%
Reed	251	56%	225	49%	223	51%	155	40%	206	45%	172	45%	190	47%
Reno	168	52%	137	43%	124	42%	107	33%	116	36%	118	32%	185	48%
Spanish Springs	Not Open	Not Open	Not Open	Not Open	72	37%	62	23%	110	39%	60	19%	124	38%
Sparks	138	48%	109	39%	66	36%	55	37%	48	36%	55	36%	73	60%
TMCC HS	40	38%	37	30%	-	-	-	-	-	-	-	-	-	-
Washoe	-	-	-	-	-	-	-	-	-	-	-	-	-	-
Wooster	90	42%	64	28%	71	40%	65	34%	76	38%	55	31%	33	21%
Total*	1166	46%	1092	40%	1185	42%	996	36%	1075	38%	967	33%	1112	37%

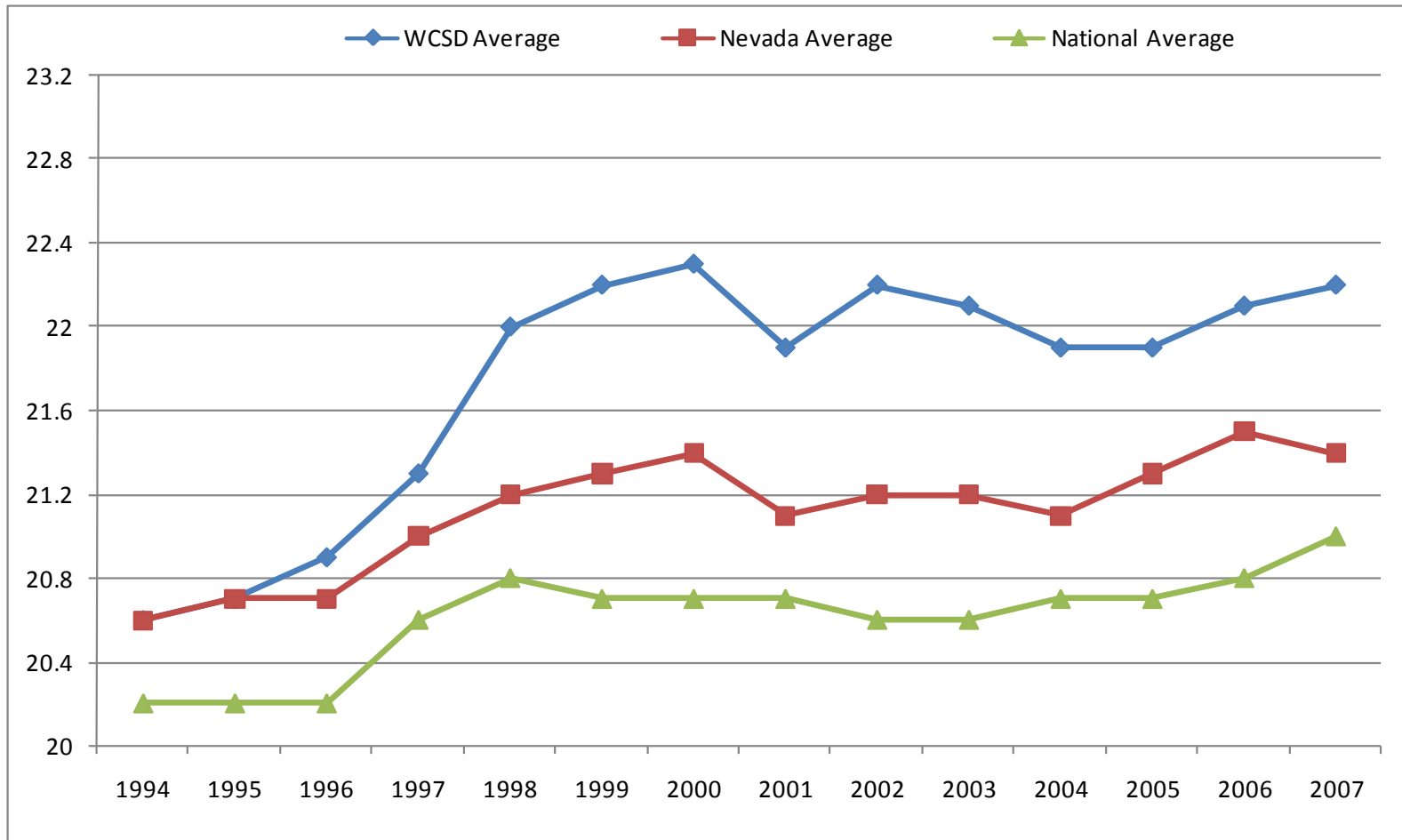
* Total numbers are higher than the sum of individual schools because AACT, Gerlach, TMCC and Washoe had too few students tested to report. Individual school test data are not published for schools with fewer than 30 ACT participants, but the participants are included in district totals.

‘-’ Denotes too few students tested to report.

COLLEGE ENTRANCE EXAMS

ACT Math Scores

WCSD, Nevada and National Comparisons



ACT Scores are reported on a scale from 1 to 36. For purposes of this comparison the scale has been reduced to enhance visual discrimination.

COLLEGE ENTRANCE EXAMS

ACT Math Scores

By High School

High Schools	2001	2002	2003	2004	2005	2006	2007
AACT	Not Open	Not Open	Not Open	Not Open	Not Open	-	-
Damonte Ranch	Not Open	Not Open	Not Open	Not Open	-	-	-
Galena	22.2	22.1	21.6	22.2	23.5	23.3	23.7
Gerlach	-	-	-	-	-	-	-
Hug	20.9	20.6	19.8	19.5	18.7	18.1	17.8
Incline	21.3	21.6	24.5	-	-	-	22.7
McQueen	23.3	23.3	23.9	23.3	22.4	22.6	23.2
North Valleys	Not Open	Not Open	19.7	20.7	20.1	21.8	20.6
Reed	21.1	21.7	22.0	21.1	21.6	22.1	22.0
Reno	23.0	24.6	24.5	23.2	23.2	22.8	24.3
Spanish Springs	Not Open	Not Open	20.2	20.4	21.6	20.8	20.5
Sparks	20.4	19.9	20.5	19.9	19.4	20.2	18.9
TMCC	22.4	20.8	-	-	-	-	-
Washoe	-	-	-	-	-	-	-
Wooster	22.1	23.1	22.7	22.8	22.9	22.2	25.4
WCSD Average*	21.9	22.2	22.1	21.9	21.9	22.1	22.2

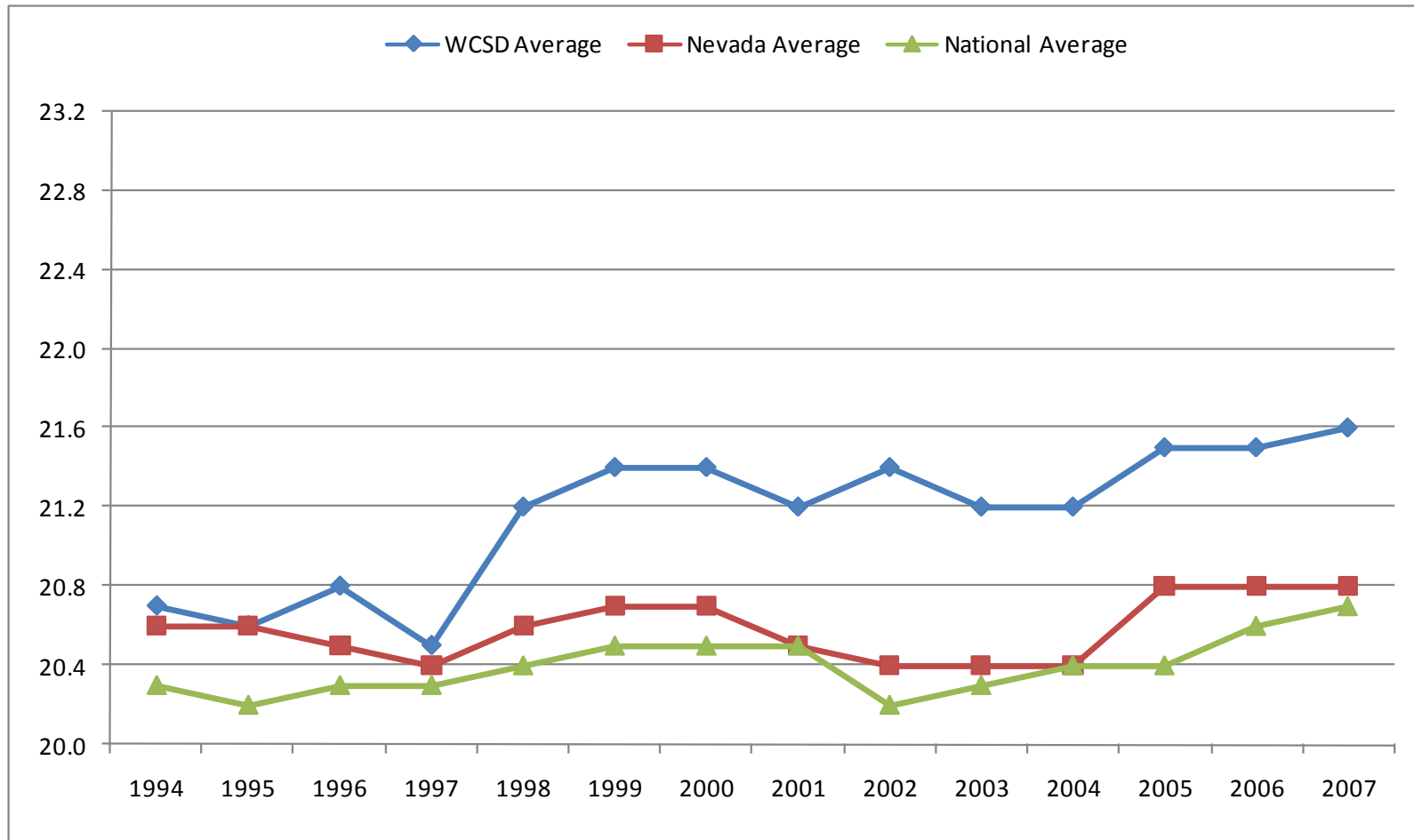
* The WCSD average is higher than the average of school scores listed in this table because AACT, Damonte Ranch, Gerlach, TMCC and Washoe had fewer than 30 students who took the ACT. Individual school test data are not published for schools with fewer than 30 ACT participants, but the participants' scores are included in district totals.

'-' Denotes too few students tested to report.

COLLEGE ENTRANCE EXAMS

ACT English Scores

WCSD, Nevada and National Comparisons



ACT Scores are reported on a scale from 1 to 36. For purposes of this comparison the scale has been reduced to enhance visual discrimination.

COLLEGE ENTRANCE EXAMS

ACT English Scores By High School

High Schools	2001	2002	2003	2004	2005	2006	2007
AACT	Not Open	Not Open	Not Open	Not Open	Not Open	-	-
Damonte Ranch	Not Open	Not Open	Not Open	Not Open	-	-	-
Galena	21.9	21.9	20.8	22.3	22.9	22.9	23.3
Gerlach	-	-	-	-	-	-	-
Hug	19.3	18.5	18.8	17.8	17.9	17.9	15.8
Incline	21.7	22.7	24.0	-	-	-	22.1
McQueen	21.7	22.0	22.0	22.3	21.8	21.8	22.8
North Valleys	Not Open	Not Open	19.0	19.9	20.1	20.1	20.6
Reed	20.3	20.7	21.3	20.1	21.0	21.0	20.7
Reno	23.5	23.5	23.5	22.2	23.3	23.3	23.7
Spanish Springs	Not Open	Not Open	19.1	20.2	21.4	21.4	19.9
Sparks	20.3	19.9	20.6	19.1	19.8	19.8	18.9
TMCC	-	-	-	-	-	-	-
Washoe	-	-	-	-	-	-	-
Wooster	20.9	20.5	21.5	21.3	21.8	21.8	24.5
WCSD Average*	21.2	21.4	21.2	21.2	21.5	21.5	21.6

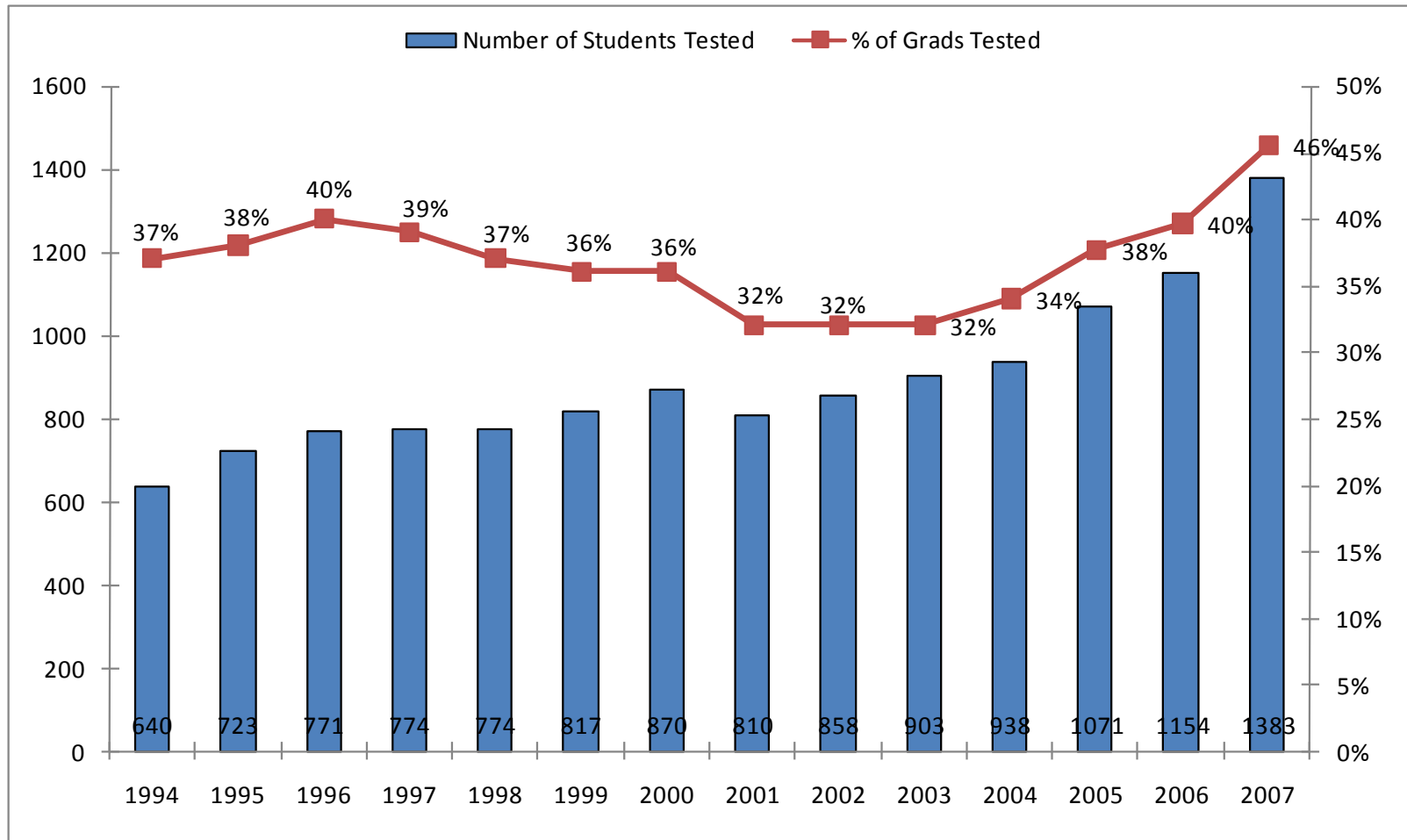
* The WCSD average is higher than the average of school scores listed in this table because AACT, Damonte Ranch, Gerlach, TMCC and Washoe had fewer than 30 students who took the ACT. Individual school test data are not published for schools with fewer than 30 ACT participants, but the participants' scores are included in district totals.

'-' Denotes too few students tested to report.

COLLEGE ENTRANCE EXAMS

SAT Participation

Number and Percentage of WUSD Graduates Who Took the SAT



COLLEGE ENTRANCE EXAMS

SAT Participation by High School

Number and Percentage of WCSD Graduates Who Took the SAT

High Schools	2001		2002		2003		2004		2005		2006		2007	
	N	%	N	%	N	%	N	%	N	%	N	%	N	%
AACT	Not Open	Not Open	Not Open	Not Open	Not Open	Not Open	Not Open	Not Open	Not Open	Not Open	-	-	-	-
Damonte Ranch	Not Open	Not Open	Not Open	Not Open	Not Open	Not Open	Not Open	Not Open	-	-	53	49%	76	55%
Galena	134	46%	190	49%	163	49%	166	43%	195	62%	155	51%	181	61%
Gerlach	-	-	-	-	-	-	-	-	-	-	-	-	-	-
Hug	46	16%	32	10%	-	-	-	-	21	12%	28	21%	46	45%
Incline	53	57%	48	59%	54	64%	45	55%	45	58%	38	50%	69	76%
McQueen	121	32%	140	34%	152	36%	153	40%	172	46%	162	43%	174	51%
North Valleys	Not Open	Not Open	Not Open	Not Open	39	17%	44	18%	67	25%	82	30%	93	36%
Reed	125	28%	135	30%	119	27%	118	31%	162	36%	158	41%	194	48%
Reno	191	69%	189	60%	211	72%	200	61%	192	59%	240	64%	285	74%
Spanish Springs	Not Open	Not Open	Not Open	Not Open	23	12%	95	35%	85	30%	134	42%	139	43%
Sparks	43	15%	23	8%	-	-	-	-	-	-	-	-	25	20%
TMCC HS	29	27%	34	28%	29	32%	21	23%	24	37%	20	22%	20	25%
Washoe	-	-	-	-	-	-	-	-	-	-	-	-	-	-
Wooster	63	30%	61	26%	61	35%	69	36%	81	40%	68	38%	81	51%
Total*	810	32%	858	32%	901	32%	938	34%	1071	38%	1154	40%	1383	46%

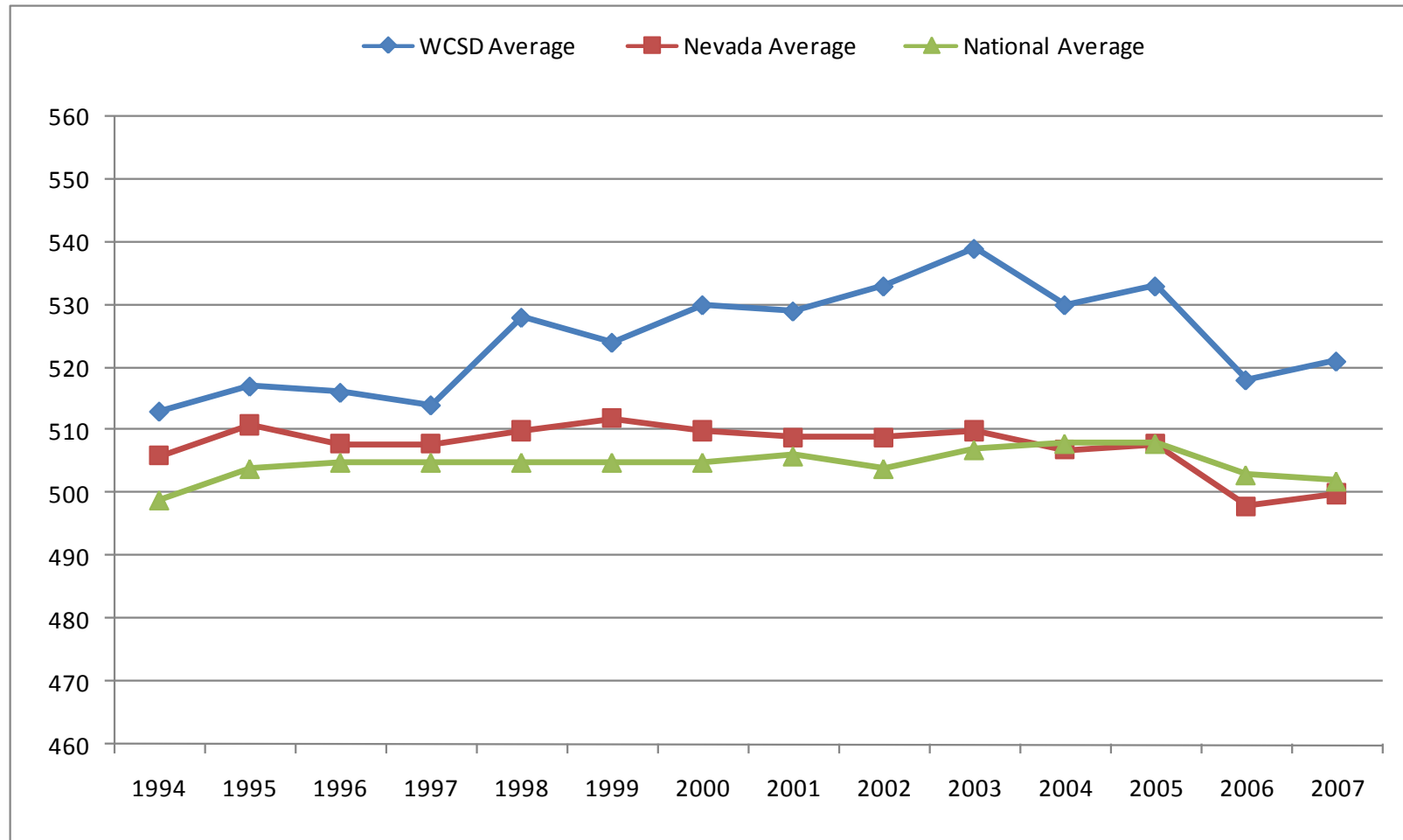
* Total numbers are higher than the sum of individual schools because AACT, Gerlach, TMCC and Washoe had too few students tested to report. Individual school test data are not published for schools with fewer than 20 SAT participants, but the participants are included in district totals.

“-” Denotes too few students tested to report.

COLLEGE ENTRANCE EXAMS

SAT Verbal Scores

WCSD, Nevada and National Comparisons



SAT Verbal scores range from 200 - 800, with 500 considered average. For purposes of this comparison, the scale has been reduced to enhance visual discrimination. The SAT was re-centered for the 1993-1994 and 1994-1995 school years; score comparisons from previous years are not valid. Substantial changes to the SAT format and content were instituted in March 2005 and are first reflected in the 2005-2006 scores.

COLLEGE ENTRANCE EXAMS

SAT Verbal Scores By High School

High Schools	2001	2002	2003	2004	2005	2006	2007
AACT	Not Open	Not Open	Not Open	Not Open	Not Open	-	-
Damonte Ranch	Not Open	Not Open	Not Open	Not Open	-	-	496
Galena	526	519	531	533	544	539	544
Gerlach	-	-	-	-	-	-	-
Hug	515	479	-	-	-	457	414
Incline	540	526	533	545	534	549	523
McQueen	530	549	564	555	535	523	532
North Valleys	Not Open	Not Open	486	511	499	490	487
Reed	510	517	534	510	525	506	505
Reno	549	559	558	549	556	538	557
Spanish Springs	Not Open	Not Open	484	486	524	492	508
Sparks	492	532	-	-	-	-	475
TMCC	580	571	559	534	553	551	561
Washoe	-	-	-	-	-	-	-
Wooster	522	512	525	514	530	516	511
WCSD Average*	529	533	539	530	533	518	521

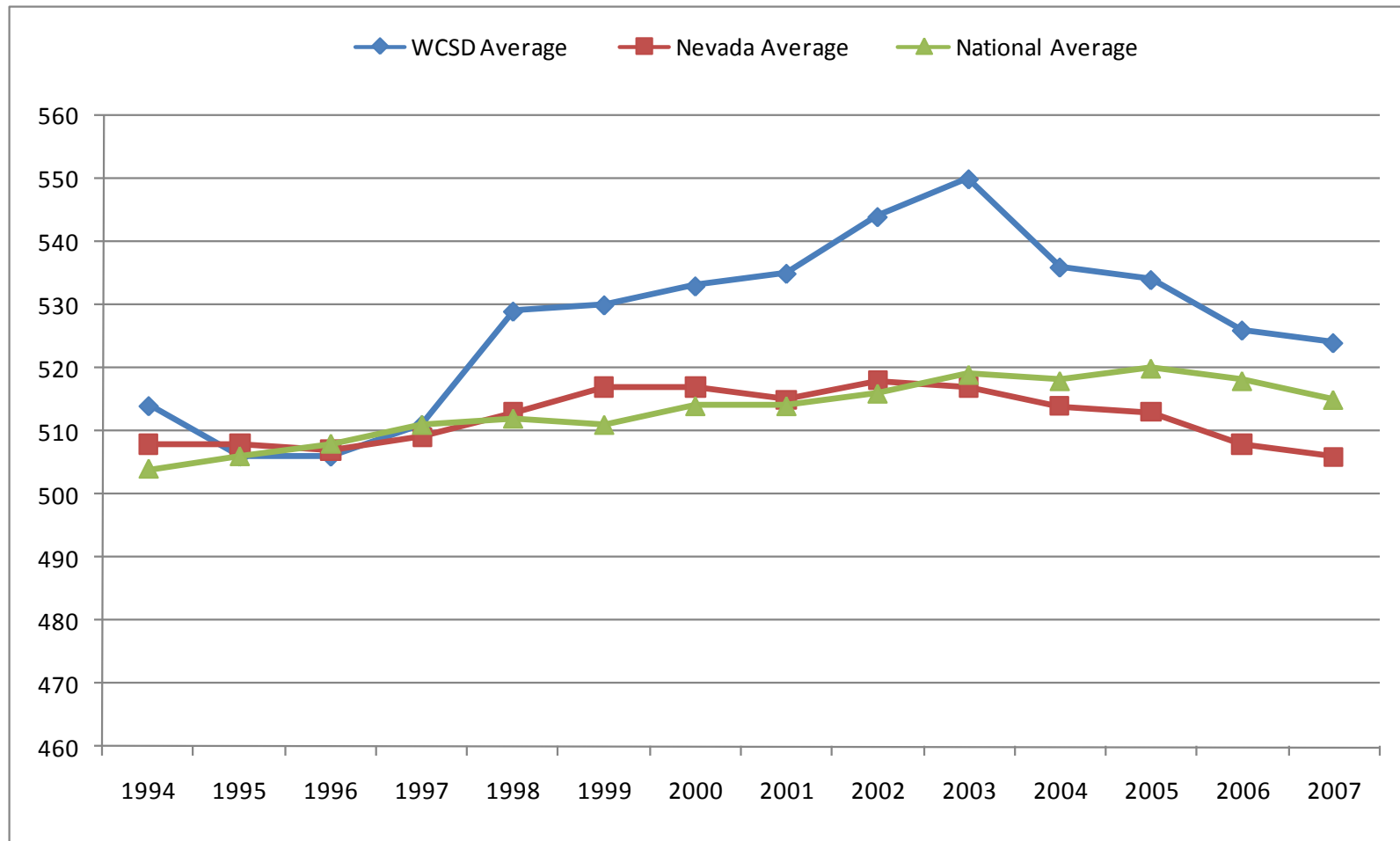
* The WCSD average is higher than the average of school scores listed in this table because AACT, Damonte Ranch, Gerlach, TMCC and Washoe had fewer than 20 students who took the SAT. Individual school test data are not published for schools with fewer than 20 SAT participants, but the participants' scores are included in district totals.

'-' Denotes too few students tested to report.

COLLEGE ENTRANCE EXAMS

SAT Math Scores

WCSD, Nevada and National Comparisons



SAT Verbal scores range from 200 - 800, with 500 considered average. For purposes of this comparison, the scale has been reduced to enhance visual discrimination. The SAT was re-centered for the 1993-1994 and 1994-1995 school years; score comparisons from previous years are not valid. Substantial changes to the SAT format and content were instituted in March 2005 and are first reflected in the 2005-2006 scores.

COLLEGE ENTRANCE EXAMS

SAT Math Scores

By High School

High Schools	2001	2002	2003	2004	2005	2006	2007
AACT	Not Open	Not Open	Not Open	Not Open	Not Open	-	-
Damonte Ranch	Not Open	Not Open	Not Open	Not Open	-	-	488
Galena	527	529	534	535	547	550	544
Gerlach	-	-	-	-	-	-	-
Hug	523	522	-	-	-	450	433
Incline	549	530	564	553	544	554	526
McQueen	552	562	579	564	540	534	537
North Valleys	Not Open	Not Open	511	500	490	492	485
Reed	517	533	546	526	531	529	525
Reno	546	560	566	550	556	538	554
Spanish Springs	Not Open	Not Open	500	493	515	497	505
Sparks	514	536	-	-	-	-	443
TMCC	549	551	550	566	530	513	556
Washoe	-	-	-	-	-	-	-
Wooster	536	545	534	546	537	536	530
WCSD Average*	535	544	550	536	534	526	524

* The WCSD average is higher than the average of school scores listed in this table because AACT, Damonte Ranch, Gerlach, TMCC and Washoe had fewer than 20 students who took the SAT. Individual school test data are not published for schools with fewer than 20 SAT participants, but the participants' scores are included in district totals.

'-' Denotes too few students tested to report.

GATEWAY CURRICULUM

Percentage of 2004 through 2007 Graduates Who Met Gateway Science and Math Requirements

High Schools	Earned 3 Science Credits				Earned 4 Math Credits				Earned Math Credit Beyond Algebra 3-4			
	Class of 2004	Class of 2005	Class of 2006	Class of 2007	Class of 2004	Class of 2005	Class of 2006	Class of 2007	Class of 2004	Class of 2005	Class of 2006	Class of 2007
AACT	No Seniors	No Seniors	40%	45%	No Seniors	No Seniors	7%	18%	No Seniors	No Seniors	3%	15%
Damonte Ranch	No Seniors	51%	60%	66%	No Seniors	18%	23%	31%	No Seniors	18%	19%	16%
Galena	80%	80%	74%	78%	40%	60%	50%	49%	32%	50%	45%	46%
Gerlach*	44%	33%	86%	100%	78%	33%	0%	0%	44%	17%	0%	0%
Hug	46%	50%	53%	53%	24%	33%	26%	27%	12%	17%	15%	16%
Incline	56%	65%	70%	71%	40%	42%	37%	38%	35%	45%	33%	36%
McQueen	70%	81%	75%	78%	47%	56%	46%	58%	38%	40%	37%	46%
North Valleys	65%	69%	69%	75%	35%	42%	42%	49%	24%	33%	31%	46%
Reed	71%	77%	74%	67%	42%	50%	53%	32%	39%	43%	49%	47%
Reno	86%	89%	85%	87%	56%	57%	59%	62%	51%	50%	47%	60%
Spanish Springs	64%	66%	73%	77%	26%	37%	41%	45%	19%	33%	33%	41%
Sparks	76%	60%	77%	74%	60%	25%	29%	37%	27%	21%	28%	42%
TMCC	48%	54%	60%	48%	5%	20%	21%	22%	10%	45%	51%	46%
Washoe**	9%	8%	25%	17%	2%	2%	1%	3%	1%	2%	3%	10%
Wooster	53%	54%	37%	75%	21%	43%	25%	51%	18%	38%	25%	39%
Total	67%	69%	69%	72%	38%	45%	41%	44%	30%	37%	36%	43%

* Gerlach percentages are based on very small numbers of students (usually fewer than 10)

** Washoe High School is an alternative school.

GATEWAY CURRICULUM

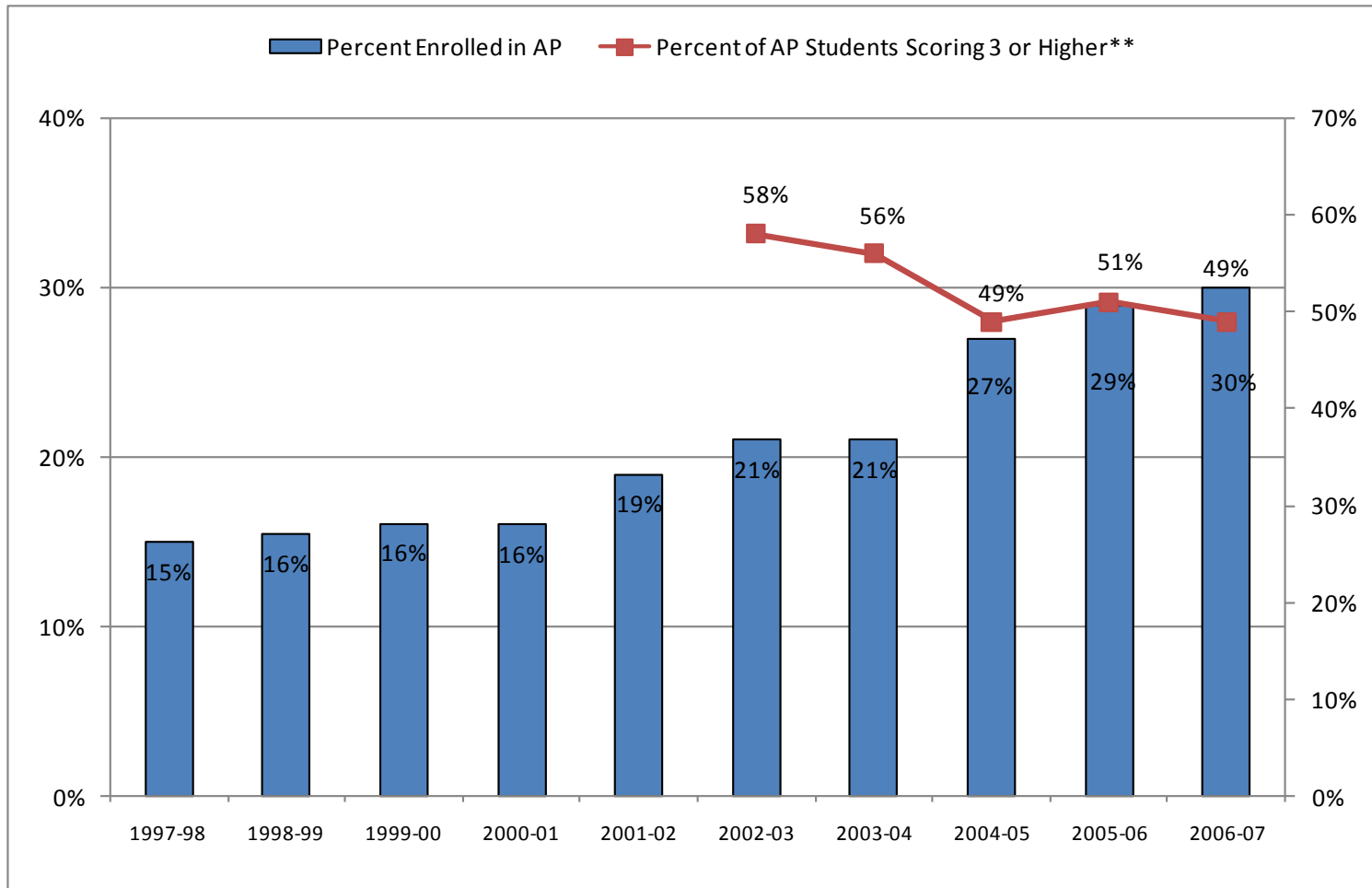
Percentage of Seniors Taking Four, Five and Six or More Classes

High Schools	Four Classes				Five Classes				Six Classes			
	Class of 2004	Class of 2005	Class of 2006	Class of 2007	Class of 2004	Class of 2005	Class of 2006	Class of 2007	Class of 2004	Class of 2005	Class of 2006	Class of 2007
AACT*	Not Open	No Seniors	N/A	N/A	Not Open	No Seniors	N/A	N/A	Not Open	No Seniors	N/A	N/A
Damonte Ranch	No Seniors	3%	24%	17%	No Seniors	11%	19%	23%	No Seniors	86%	56%	60%
Galena	25%	38%	36%	27%	34%	30%	34%	37%	41%	31%	30%	36%
Gerlach	-	-	14%	0%	-	-	0%	0%	100%	100%	86%	100%
Hug	6%	15%	29%	2%	19%	23%	28%	15%	75%	62%	43%	83%
Incline	29%	22%	20%	19%	33%	39%	26%	26%	39%	39%	54%	55%
McQueen	13%	28%	20%	20%	34%	31%	35%	30%	54%	42%	45%	50%
North Valleys	8%	22%	20%	22%	25%	36%	32%	27%	67%	42%	48%	51%
Reed	30%	5%	5%	30%	32%	41%	37%	30%	38%	53%	59%	39%
Reno	24%	44%	41%	39%	41%	31%	28%	33%	35%	26%	31%	28%
Spanish Springs	18%	32%	27%	27%	27%	27%	36%	27%	56%	41%	37%	45%
Sparks	27%	4%	4%	6%	31%	16%	18%	16%	42%	80%	78%	79%
TMCC*	N/A	N/A	N/A	N/A	N/A	N/A	N/A	N/A	N/A	N/A	N/A	N/A
Washoe*	N/A	N/A	N/A	N/A	N/A	N/A	N/A	N/A	N/A	N/A	N/A	N/A
Wooster	20%	32%	33%	2%	36%	28%	31%	23%	44%	41%	36%	75%
Total	22%	25%	24%	23%	31%	31%	31%	28%	46%	45%	45%	49%

* AACT, TMCC and Washoe high schools have unique scheduling options, so are not included.

ADVANCED PLACEMENT / IB

Percentage of WCSD Juniors and Seniors Enrolled in Advanced Placement or IB* Courses



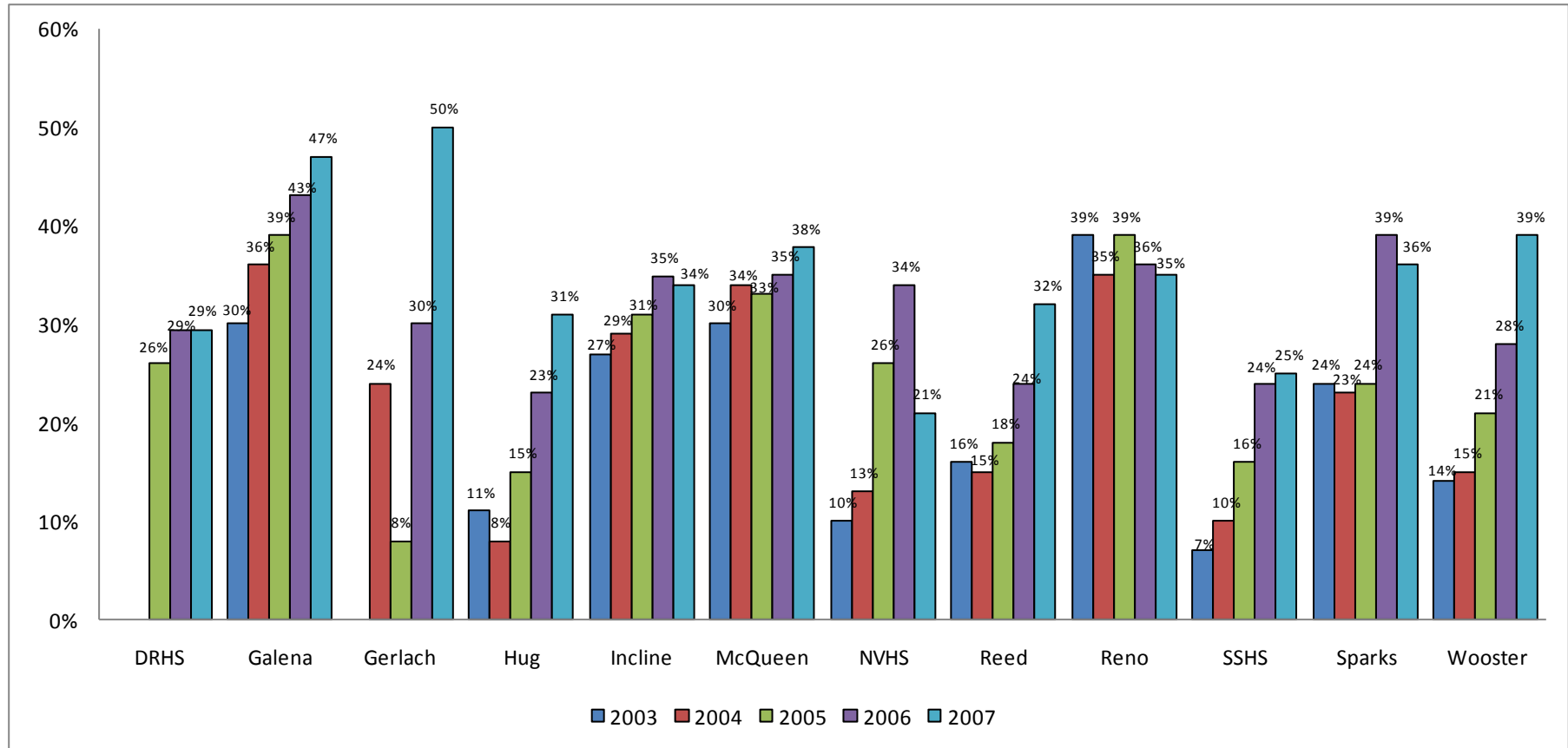
* International Baccalaureate Program

** Data on percentage scoring 3 or higher are not available prior to 2003; percentage includes IB scores of 4 or higher.

Data have been corrected for previous years.

ADVANCED PLACEMENT / IB

Percentage of Juniors and Seniors by School Who Took at Least One Advanced Placement or IB* Exam



* International Baccalaureate Program
 AP classes are not offered at AACT, TMCC or Washoe

ENROLLMENT IN ADVANCED PLACEMENT / IB* COURSES

Percentage of Juniors and Seniors by School Who Took at Least One Advanced Placement or IB* Course

High School	2000-01	2001-02	2002-03	2003-04	2004-05	2005-06	2006-07	
	Percent Participation	Percent Participation	Percent Participation	Percent Participation	Percent Participation	Percent Participation	Number of AP Students	Percent Participation
Damonte Ranch	Not Open	Not Open	Not Open	-	26%	29%	135	29%
Galena	24%	27%	30%	36%	39%	43%	298	47%
Gerlach	-	20%	-	24%	8%	30%	6	50%
Hug	7%	7%	11%	8%	15%	23%	120	31%
Incline	28%	29%	27%	29%	31%	35%	52	34%
McQueen	24%	29%	30%	34%	33%	35%	304	38%
North Valleys	Not Open	12%	10%	13%	26%	34%	149	21%
Reed	9%	17%	16%	15%	18%	24%	294	32%
Reno	25%	32%	39%	35%	39%	36%	272	35%
Spanish Springs	Not Open	4%	7%	10%	16%	24%	211	25%
Sparks	8%	20%	24%	23%	24%	39%	120	36%
Wooster	12%	15%	14%	15%	21%	28%	195	39%
All High Schools	16%	19%	21%	21%	27%	29%	2117	30%

* International Baccalaureate Program

AP classes are not offered at AACT, TMCC or Washoe

'-' Denotes no students enrolled or too few students to report.

Data have been corrected for previous years.

PERFORMANCE IN ADVANCED PLACEMENT / IB*

Percent of Students Scoring 3 or Higher on AP Exams**

High School	% of AP Students Scoring 3 or higher on AP Exams**			
	2003-04	2004-05	2005-06	2006-07
Damonte Ranch	33%	21%	41%	37%
Galena	59%	61%	69%	68%
Gerlach	-	-	-	-
Hug	25%	20%	7%	8%
Incline	70%	70%	75%	75%
McQueen	71%	58%	62%	63%
North Valleys	26%	28%	32%	32%
Reed	55%	47%	47%	39%
Reno	65%	65%	66%	66%
Spanish Springs	49%	51%	35%	43%
Sparks	19%	10%	17%	14%
TMCC	-	-	-	-
Washoe	-	-	-	-
Wooster	32%	40%	46%	44%
WCSD	56%	49%	51%	49%

* International Baccalaureate Program

** Data are not available for 2001-2003; includes IB students scoring 4 or higher

AP classes are not offered at AACT, TMCC or Washoe

‘-’ Denotes no students enrolled or too few students to report.

ADVANCED PLACEMENT CHALLENGE INDEX

The Challenge Index, developed by *Washington Post* education writer Jay Mathews, measures a public high school's effort to challenge its students. The Index is calculated by dividing the number of AP or IB or exams taken by the number of seniors who graduated in June. Exam scores are not included in the calculation and exams taken by all students, not just seniors, are counted. The rating is not a measurement of the overall quality of the school but illuminates one factor that many educators and researchers consider important. For purposes of this calculation, the WCSD graduating class includes all students who earned a diploma plus those students who had enough credits to graduate but failed one or more sections of a state-mandated graduation exam. A Challenge Index of 1.0 or higher meets the benchmark defined by the measure's author.

School	Class of 2005		Class of 2006		Class of 2007	
	Challenge Index	National Ranking**	Challenge Index	National Ranking**	Challenge Index	National Ranking**
Damonte Ranch	1.19	-	1.23	1014	1.27	1089
Galena	1.71	531	1.86	509	1.67	535
Gerlach	-	-	-	-	1.50	-
Hug	0.68	-	1.05	1201	1.41	1289
Incline	1.36	835	1.61	690	1.51	732
McQueen	1.77	488	1.61	684	1.78	724
North Valleys	1.18	1045	1.56	736	1.43	783
Reed	0.85	-	1.08	1162	1.22	1248
Reno	1.57	650	1.57	732	1.60	780
Spanish Springs	0.66	-	1.03	1219	1.02	1309
Sparks	1.34	868	1.54	754	1.66	803
Wooster*	1.63	495	1.74	598	1.74	630

* Wooster offers both AP courses and the International Baccalaureate Program

** National rankings published in *Newsweek*. All of the ranked schools have an index of at least 1.0 and are in the top 5 percent of the nation's public schools on this measure. Source: *The Complete List: 1,300 Top U.S. Schools*; <http://www.newsweek.com/id/39380/?q=2007/rank/1/&s=Nevada>

'-' Denotes fewer than 10 students in the graduating class.

AP classes are not offered at AACT, TMCC or Washoe high schools

MILLENNIUM SCHOLARSHIP

Percentage of Graduates Eligible for the Millennium Scholarship by Year

SCHOOL	Percent of Qualified Seniors 1999-2000	Percent of Qualified Seniors 2000-2001	Percent of Qualified Seniors 2001-2002	Percent of Qualified Seniors 2002-2003	Percent of Qualified Seniors 2003-2004	Percent of Qualified Seniors 2004-2005	Percent of Qualified Seniors 2005-2006	# of Qualified Seniors 2006-2007	# of Graduates 2006-2007	Percent of Qualified Seniors 2006-2007
AACT	not open	not open	not open	not open	not open	not open	37%	9	33	27%
Damonte Ranch	not open	not open	not open	not open	not open	37%	45%	49	149	33%
Galena	64%	58%	65%	69%	69%	71%	65%	191	310	62%
Gerlach	13%	67%	50%	67%	67%	67%	71%	1	2	50%
Hug	33%	44%	42%	40%	49%	41%	40%	41	136	30%
Incline	49%	71%	59%	59%	59%	61%	58%	49	102	48%
McQueen	54%	59%	65%	63%	59%	58%	56%	191	358	53%
North Valleys	not open	not open	not open	51%	53%	45%	48%	115	286	40%
Reed	49%	61%	59%	71%	61%	52%	58%	217	443	49%
Reno	68%	67%	67%	78%	70%	63%	62%	247	402	61%
Spanish Springs	not open	not open	not open	52%	54%	53%	48%	169	346	49%
Sparks	44%	53%	56%	58%	47%	39%	45%	67	137	49%
TMCC	66%	74%	75%	78%	74%	75%	73%	57	81	70%
Washoe	16%	54%	44%	31%	24%	10%	8%	12	80	15%
Washoe Adult	41%	66%	26%	56%	14%	7%	6%	6	142	4%
Wooster	43%	60%	51%	63%	63%	57%	46%	98	174	56%
WCSD	50%	59%	56%	63%	57%	52%	51%	1510	3148	48%
GPA Requirement	3.00	3.00	3.00	3.00	3.00	3.10	3.10	3.25		

WCSD GRADUATING COHORTS ANALYSIS

The Tracking of WCSD Graduates* from High School to College

Graduating Cohorts

- ∞ 2006-2007 Graduates = 2922
- ∞ 2005-2006 Graduates = 2887
- ∞ 2004-2005 Graduates = 2842
- ∞ 2003-2004 Graduates = 2742
- ∞ 2002-2003 Graduates = 2635
- ∞ 2001-2002 Graduates = 2560
- ∞ 2000-2001 Graduates = 2429
- ∞ 1999-2000 Graduates = 2243
- ∞ 1998-1999 Graduates = 2227
- ∞ 1997-1998 Graduates = 2072
- ∞ 1996-1997 Graduates = 2006

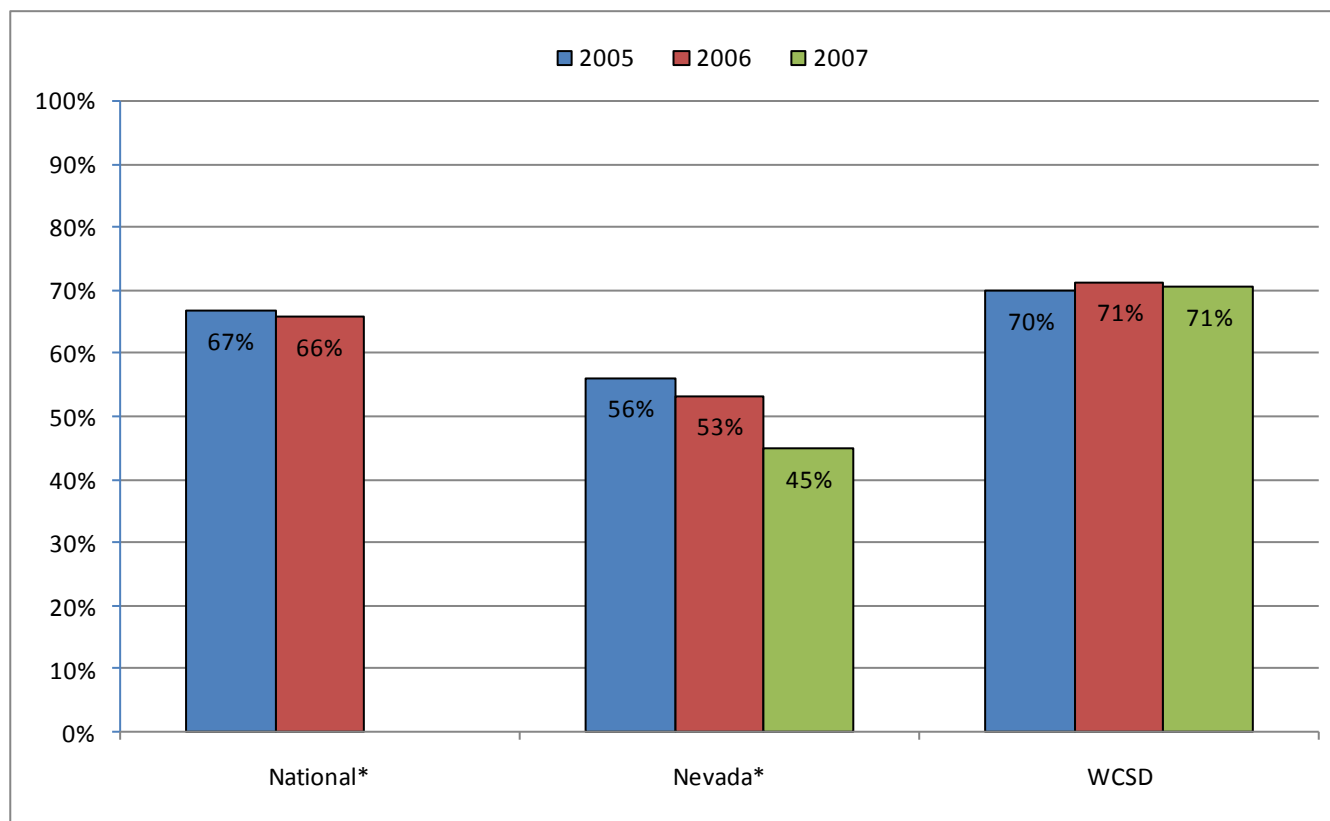
College Measures

- ∞ **Capture Rate:** The percentage of WCSD graduates enrolling at UNR, TMCC, other in-state colleges and universities and out-of-state institutions immediately following high school graduation.
- ∞ **Remediation:** Student enrollment in developmental English or math courses (intermediate algebra and below).
- ∞ **Persistence:** The rate at which a cohort returns to college with each advancing semester.
- ∞ **SAT and ACT Exams:** SAT and ACT scores of WCSD graduates* attending the University of Nevada, Reno.

* Includes standard and adjusted diplomas from District schools. Does not include Washoe Adult High School or the Charter Schools.

WCSD COLLEGE-GOING RATE FOR 2005-2007

Percentage of 2005, 2006 and 2007 High School Graduates Immediately Enrolling in Post-Secondary Education*



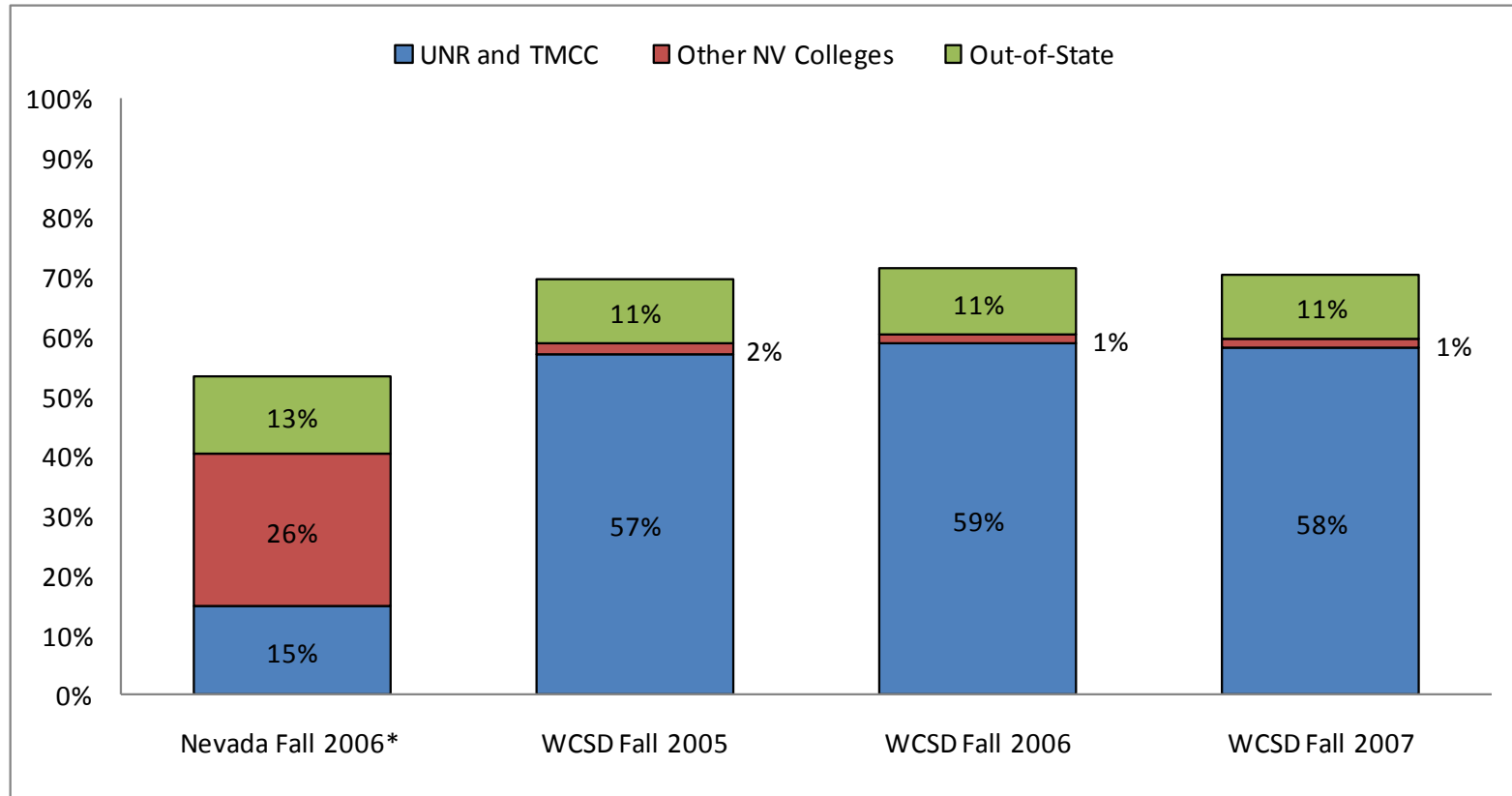
* To permit comparison with state and national rates, only WCSD graduates with standard, advanced and honors diplomas are included in the percentages depicted in the college-going rate charts. Students with adjusted diplomas were excluded. Additionally, the Nevada and national rates include charter and private high schools, but the WCSD rate does not. The national rate shown here is based on census data, and differs from the national rate reported in the 2003-04 Data Profile. *New data sources and calculation methods were applied beginning with the 2006 edition. Therefore the college going rates reported here are not directly comparable to those reported for years prior to 2005.*

2006 is the most recent year for which the national college-going rate is available.

Sources: Postsecondary Education Opportunity; Nevada System of Higher Education 2007 Report on Nevada College Continuation Rates, WCSD Data Profile, National Student Clearinghouse Student Tracker Service

WCSD COLLEGE-GOING RATE FOR 2005-2007

Percentage of Nevada and WCSD High School Graduates Enrolling in Local, In-state and Out-of-state Institutions



* To permit comparison with state rates, only WCSD graduates with standard, advanced and honors diplomas are included in the percentages depicted in the college-going rate charts. Students with adjusted diplomas were excluded. Additionally, the Nevada rates include charter and private high schools, but the WCSD rate does not. The *out-of-state* college-going rate for fall 2007 is an estimate. Data used in previous years to produce out-of-state college-going rates are no longer available. Total percentages differ from those on previous chart due to rounding.

Sources: Nevada System of Higher Education Annual Reports on College Continuation and College remediation. WCSD Data Profile, National Student Clearinghouse Student Tracker Service

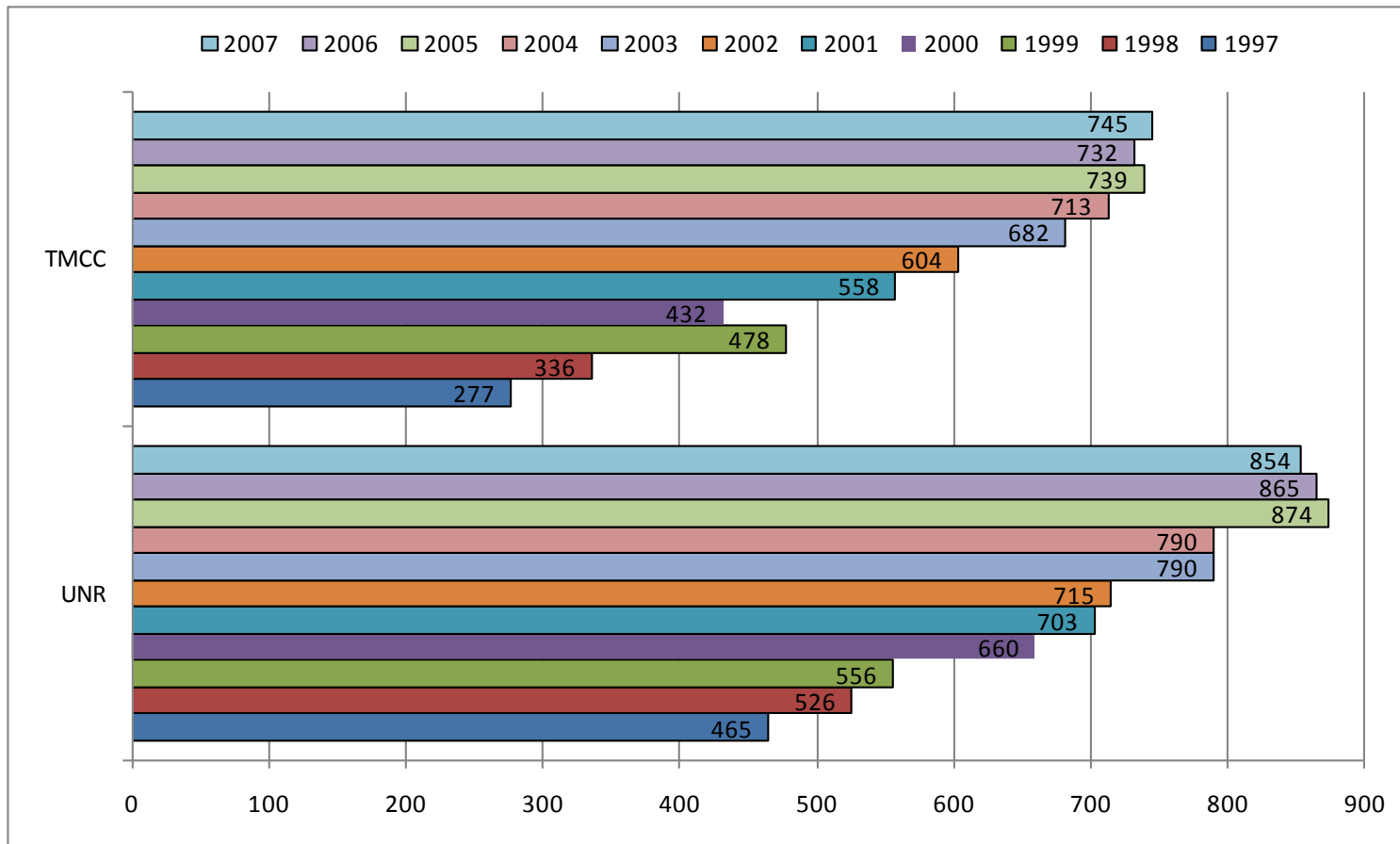
CAPTURE RATES BASED ON UNR & TMCC ENROLLMENT COUNTS

The college-going rate for Washoe County School District reported in the previous two pages was calculated using student-matched data collected by the National Student Clearinghouse Student Tracker Service. The student-matched data generate a more precise college-going rate than the rates published in previous Data Profile reports. Using student-matched data, WCSD students who received an adjusted diploma or did not graduate (i.e. drop outs and students who received a certificate of attendance), but nevertheless enrolled in college, can be identified and excluded from the analysis. Additionally, students who are dual-enrolled (i.e. taking classes at both UNR and TMCC during the same term) can be identified so that they are only counted once in the college-going rate.

The TMCC and UNR capture rates reported on the following pages differ from the college-going rates reported on pages 30 and 31 in that they may include WCSD students who received an adjusted diploma, students who did not graduate, and/or students dual-enrolled at UNR and TMCC.

WCSD HIGH SCHOOL GRADUATES ATTENDING UNR OR TMCC

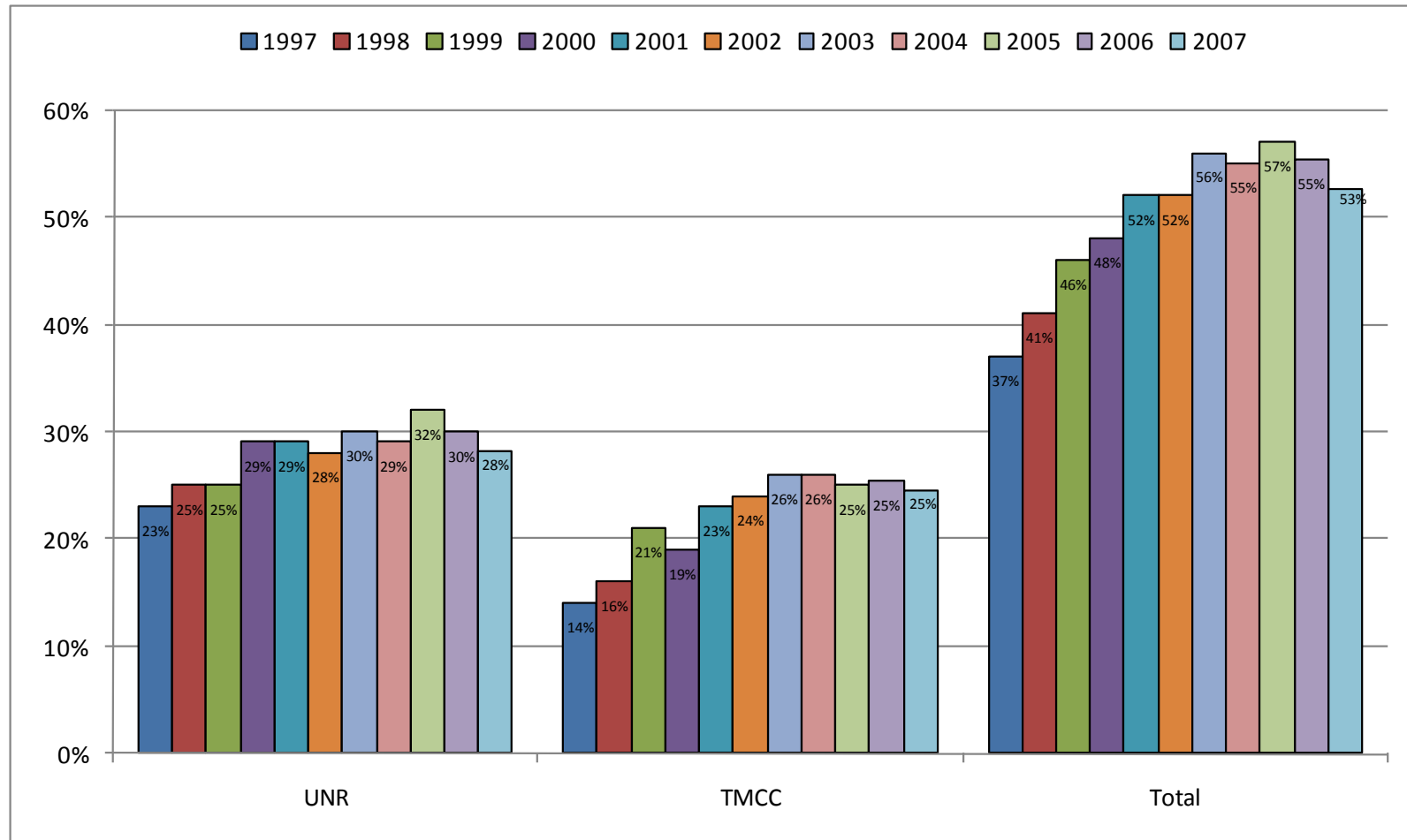
Number of WCSD Graduates Enrolling by Year



Numbers may include WCSD students who did not receive a diploma and students co-enrolled at both institutions, and are not comparable to the college-going rates reported on pages 30 and 31.

CAPTURE RATES OF HIGH SCHOOL COHORTS BY UNR & TMCC

Percentage of WCSD Graduates Enrolling in UNR and TMCC by Year



Data have been corrected from previous years.

Numbers may include WCSD students who did not receive a diploma and students co-enrolled at both institutions, and are not comparable to the college-going rates reported on pages 30 and 31.

COMBINED UNR & TMCC CAPTURE RATE BY HIGH SCHOOL

High Schools	Fall 1999	Fall 2000	Fall 2001	Fall 2002	Fall 2003	Fall 2004	Fall 2005	Fall 2006	Fall 2007	
	%	%	%	%	%	%	%	%	%	N
AACT	Not Open	Not Open	Not Open	Not Open	Not Open	Not Open	-	37%	58%	19
Damonte Ranch	Not Open	Not Open	Not Open	Not Open	Not Open	-	38%	53%	49%	73
Galena	47%	55%	57%	52%	61%	76%	65%	53%	55%	170
Gerlach	33%	29%	42%	0%	67%	67%	33%	43%	50%	1
Hug	37%	39%	43%	36%	42%	36%	42%	40%	43%	59
Incline	27%	33%	26%	37%	30%	31%	32%	39%	32%	33
McQueen	53%	55%	61%	60%	62%	63%	62%	65%	60%	215
North Valleys	Not Open	Not Open	Not Open	Not Open	42%	48%	55%	52%	49%	141
Reed	49%	49%	49%	51%	55%	48%	56%	63%	53%	233
Reno	40%	46%	52%	51%	58%	53%	66%	63%	51%	206
Spanish Springs	Not Open	Not Open	Not Open	Not Open	51%	48%	51%	47%	54%	187
Sparks	40%	45%	44%	47%	56%	56%	60%	45%	65%	89
TMCC	51%	66%	62%	78%	80%	92%	82%	68%	64%	52
Washoe	66%	78%	33%	77%	57%	59%	46%	46%	48%	38
Wooster	48%	37%	52%	45%	48%	46%	55%	54%	48%	83
Total	46%	48%	52%	52%	56%	55%	57%	55%	53%	1599

Numbers may include WCSD students who did not receive a diploma and students co-enrolled at both institutions, and are not comparable to the college-going rates reported on pages 30 and 31.

'-' Denotes no graduates that year

TMCC CAPTURE RATE BY HIGH SCHOOL

High Schools	Fall 1999	Fall 2000	Fall 2001	Fall 2002	Fall 2003	Fall 2004	Fall 2005	Fall 2006	Fall 2007	
	%	%	%	%	%	%	%	%	%	N
AACT	Not Open	Not Open	Not Open	Not Open	Not Open	Not Open	-	37%	55%	18
Damonte Ranch	Not Open	Not Open	Not Open	Not Open	Not Open	-	26%	21%	21%	32
Galena	17%	15%	25%	20%	26%	23%	24%	17%	20%	62
Gerlach	0%	14%	25%	0%	67%	11%	0%	29%	0%	0
Hug	23%	17%	26%	24%	29%	27%	25%	26%	25%	34
Incline	6%	8%	10%	16%	14%	12%	13%	12%	9%	9
McQueen	18%	15%	22%	18%	23%	21%	22%	23%	23%	82
North Valleys	Not Open	Not Open	Not Open	Not Open	22%	31%	29%	28%	30%	87
Reed	25%	23%	21%	24%	24%	27%	28%	27%	23%	101
Reno	11%	12%	17%	18%	17%	16%	22%	23%	14%	58
Spanish Springs	Not Open	Not Open	Not Open	Not Open	27%	27%	19%	22%	27%	93
Sparks	23%	20%	21%	23%	30%	32%	39%	25%	44%	60
TMCC	43%	53%	46%	52%	60%	46%	53%	49%	47%	38
Washoe	64%	78%	33%	77%	57%	71%	43%	46%	48%	38
Wooster	23%	18%	22%	24%	23%	24%	25%	33%	19%	33
Total	21%	19%	23%	24%	26%	26%	25%	25%	25%	745

Numbers may include WCSO students who did not receive a diploma and students co-enrolled at both institutions, and are not comparable to the college-going rates reported on pages 30 and 31.

'-' Denotes no graduates that year

UNR CAPTURE RATE BY HIGH SCHOOL

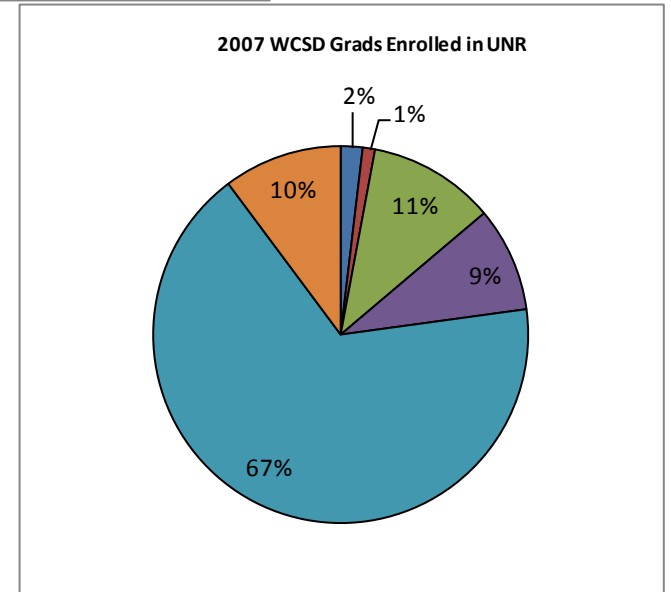
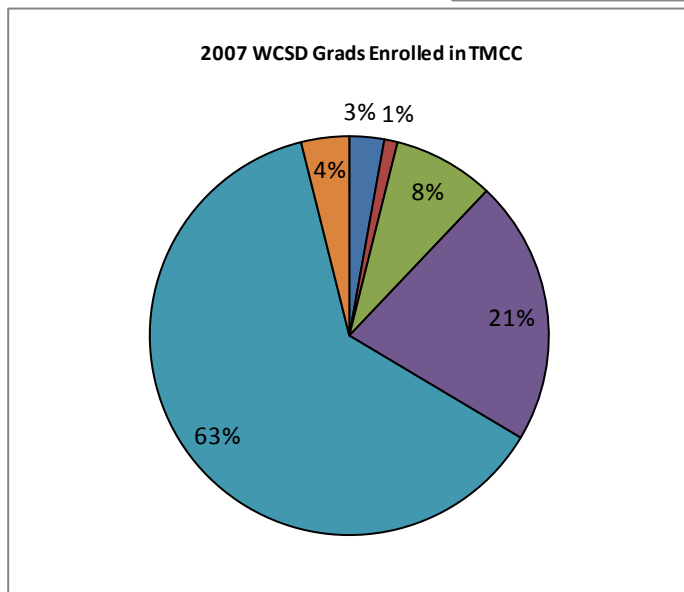
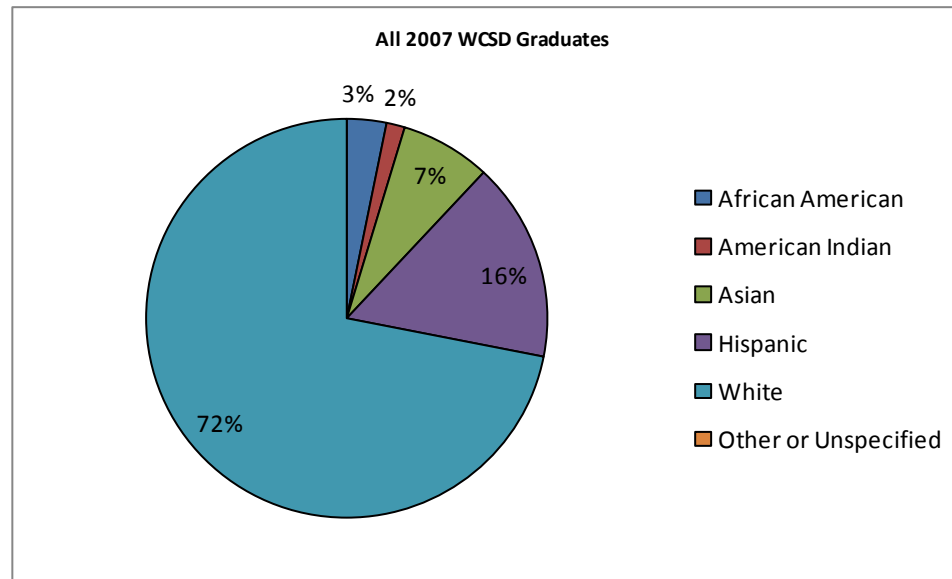
High Schools	Fall 1999	Fall 2000	Fall 2001	Fall 2002	Fall 2003	Fall 2004	Fall 2005	Fall 2006	Fall 2007	
	%	%	%	%	%	%	%	%	%	N
AACT	Not Open	Not Open	Not Open	Not Open	Not Open	Not Open	-	0%	3%	1
Damonte Ranch	Not Open	Not Open	Not Open	Not Open	Not Open	-	12%	31%	28%	41
Galena	30%	41%	33%	33%	37%	39%	41%	37%	35%	108
Gerlach	33%	14%	17%	10%	0%	33%	33%	14%	50%	1
Hug	14%	18%	18%	11%	13%	15%	17%	15%	18%	25
Incline	21%	25%	17%	21%	16%	17%	19%	28%	24%	24
McQueen	36%	41%	40%	43%	40%	41%	39%	41%	37%	133
North Valleys	Not Open	Not Open	Not Open	Not Open	20%	21%	26%	25%	19%	54
Reed	23%	27%	30%	28%	32%	29%	28%	36%	30%	132
Reno	30%	34%	38%	34%	42%	37%	44%	40%	37%	148
Spanish Springs	Not Open	Not Open	Not Open	Not Open	24%	22%	32%	25%	27%	94
Sparks	17%	25%	23%	24%	28%	18%	22%	20%	21%	29
TMCC	8%	16%	18%	26%	30%	20%	28%	19%	17%	14
Washoe	2%	0%	0%	0%	0%	0%	2%	0%	0%	0
Wooster	25%	20%	30%	21%	25%	25%	30%	21%	29%	50
Total	25%	29%	29%	28%	30%	29%	32%	30%	28%	854

Numbers may include WCSD students who did not receive a diploma and students co-enrolled at both institutions, and are not comparable to the college-going rates reported on pages 30 and 31.

'-' Denotes no graduates that year

ETHNIC COMPOSITION OF WCSD GRADUATES ATTENDING UNR & TMCC

Fall 2007 Freshmen



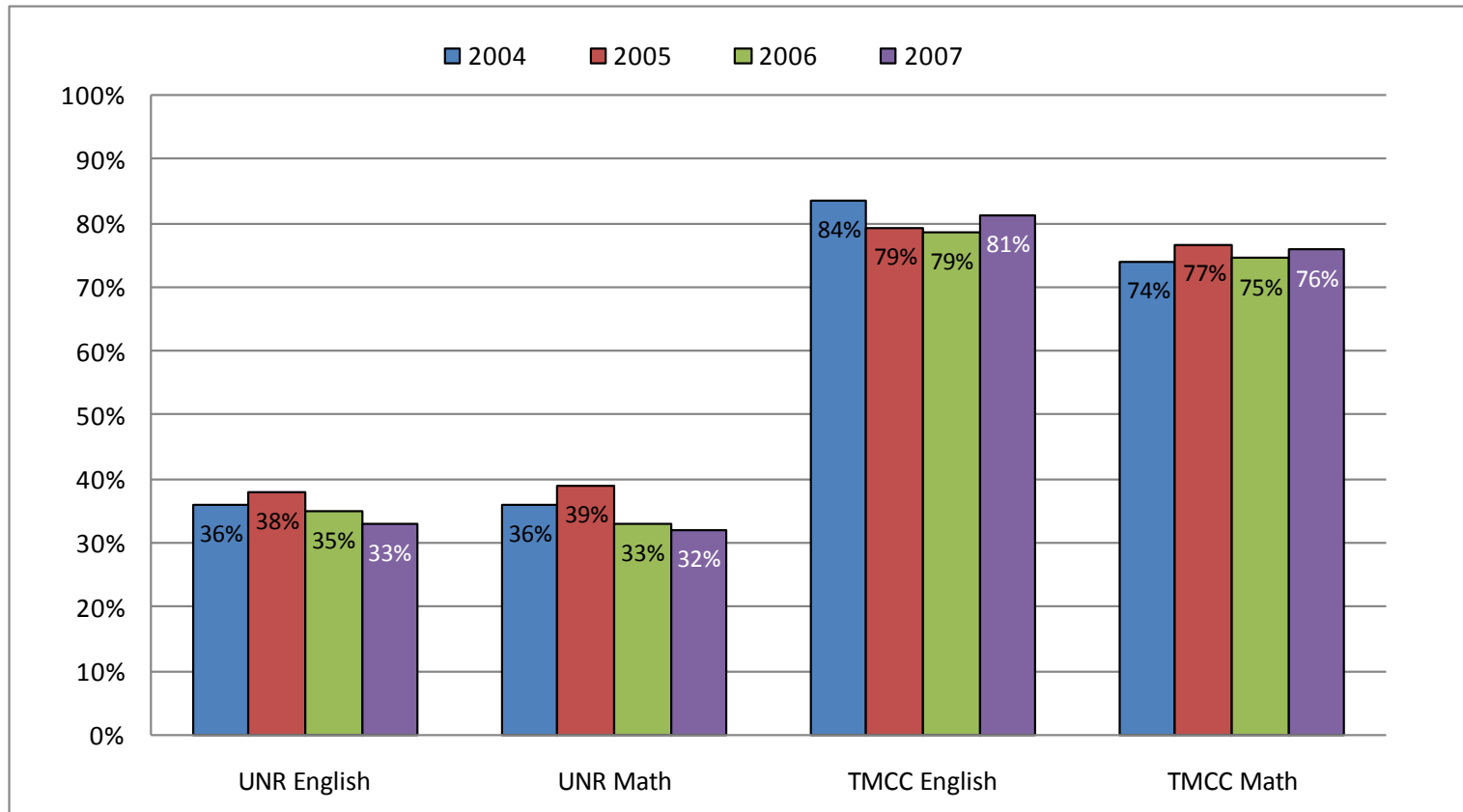
WCSD GRADUATES' NEED FOR REMEDIATION

Prior Conclusions of 4-Year Review of Remediation Data for WCSD Graduates Enrolled as Freshmen at UNR and TMCC Remediation Study Conducted Between 2002 and 2005

- ∞ The percentage of students enrolled in remedial English or math as freshmen at UNR and TMCC is lower than the percentage of students who need remedial English or math based on their placement scores.
- ∞ Over 80% of students enrolled in remedial English or math as freshman are there because of their placement exam scores and not because of self-selection.
- ∞ Enrollment in high school mathematics beyond the level of Algebra 3-4 dramatically reduces the likelihood that a student will need math remediation in college. Enrollment in Advanced Placement English and mathematics courses in high school also appears to reduce the likelihood that a student will need remediation in those content areas in college.
- ∞ In general, students who registered for remedial math in college are characterized by not having taken four years of high school math, not having taken math beyond Algebra 3-4, and often not even having taken and passed Algebra 3-4.
- ∞ Those students enrolled in remedial math in college who had completed Algebra 3-4 in high school were generally students who earned a C grade or lower in Algebra 3-4. The average cumulative math GPA in high school of these students was 2.43.

NEED FOR REMEDIATION BASED ON EXAM SCORES

Percentage of WCS D Graduates with ACT, SAT or Accuplacer Scores Demonstrating a Need for Remedial Math or English Placement*

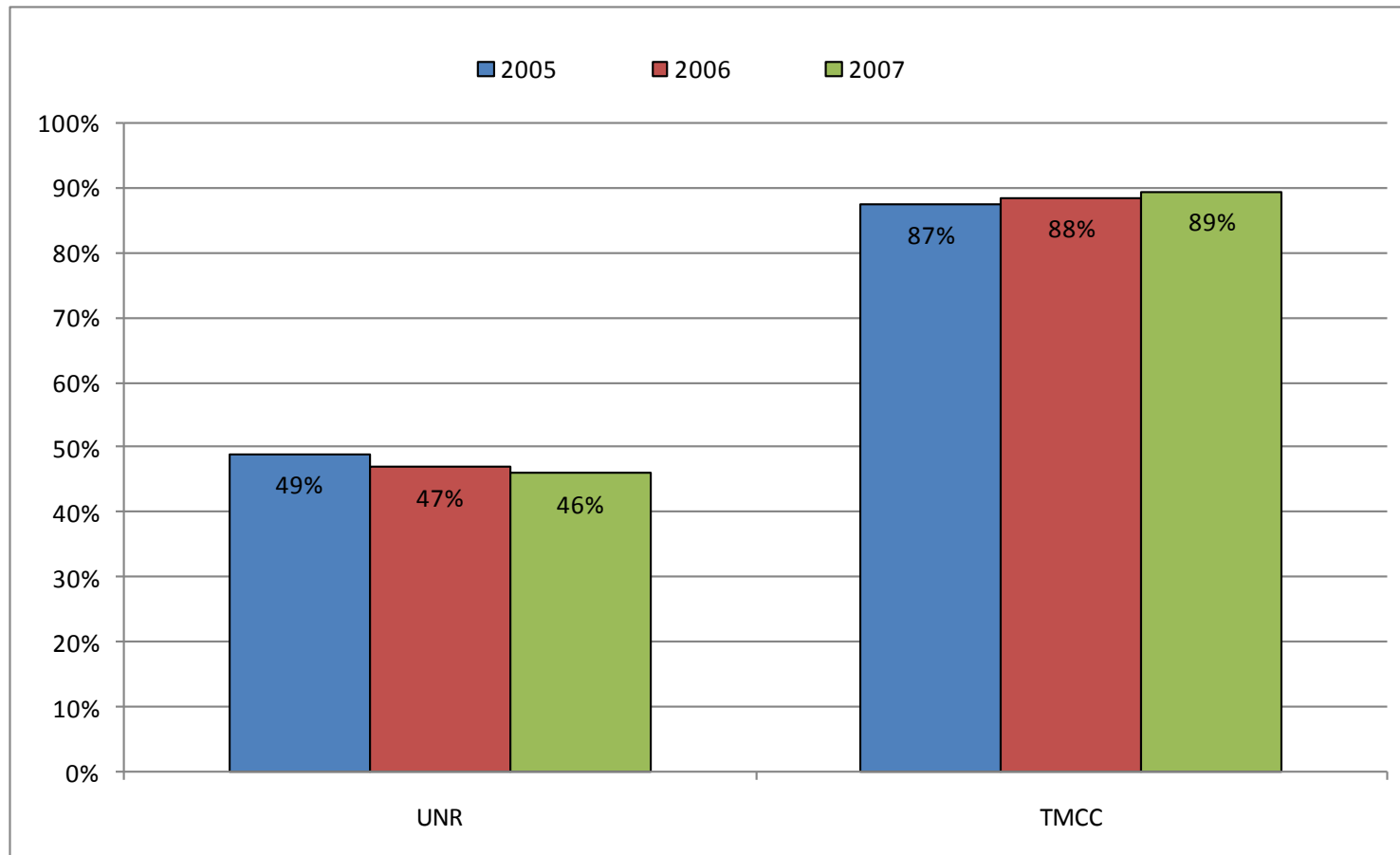


* This chart depicts students whose scores on placement exams were below the cut-off for college level work. Not all of these students enrolled in English or math in their first semester at UNR or TMCC. Placement exam cut-off scores: UNR English: ACT verbal <21; SAT verbal < 510; UNR Math: ACT math <21; SAT math <510; TMCC : Accuplacer, ACT or SAT score below cut for college level. Approximately 5% of UNR and 15% of TMCC WCS D freshmen do not have placement exam scores.

Data have been corrected for previous years.

NEED FOR REMEDIATION BASED ON EXAM SCORES

Percentage of WCSD Graduates with ACT, SAT or Accuplacer Scores Demonstrating a Need for Remedial Math or English Placement*

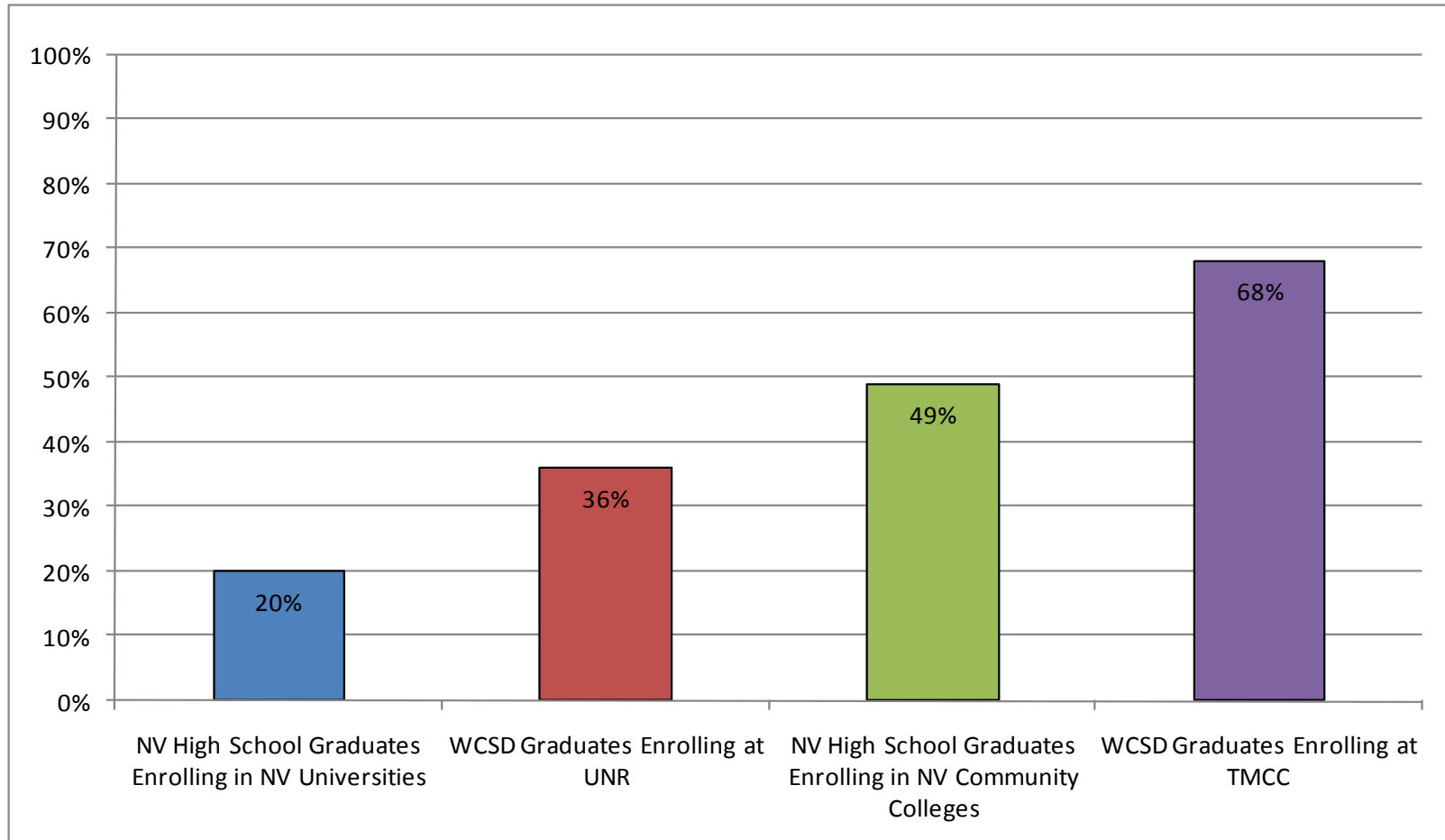


* This chart depicts students whose scores on placement exams were below the cut-off for college level work. Not all of these students enrolled in English or math in their first semester at UNR or TMCC. Placement exam cut-off scores: UNR English: ACT verbal <21; SAT verbal < 510; UNR Math: ACT math <21; SAT math <510; TMCC: Accuplacer, ACT or SAT score below cut for college level. Approximately 5% of UNR and 15% of TMCC WCSD freshmen do not have placement exam scores.

Data have been corrected for previous years.

ENROLLMENT IN REMEDIAL CLASSES

Percentage of Nevada and WCSD 2007 High School Graduates Enrolling in Remedial Courses in Fall 2007*

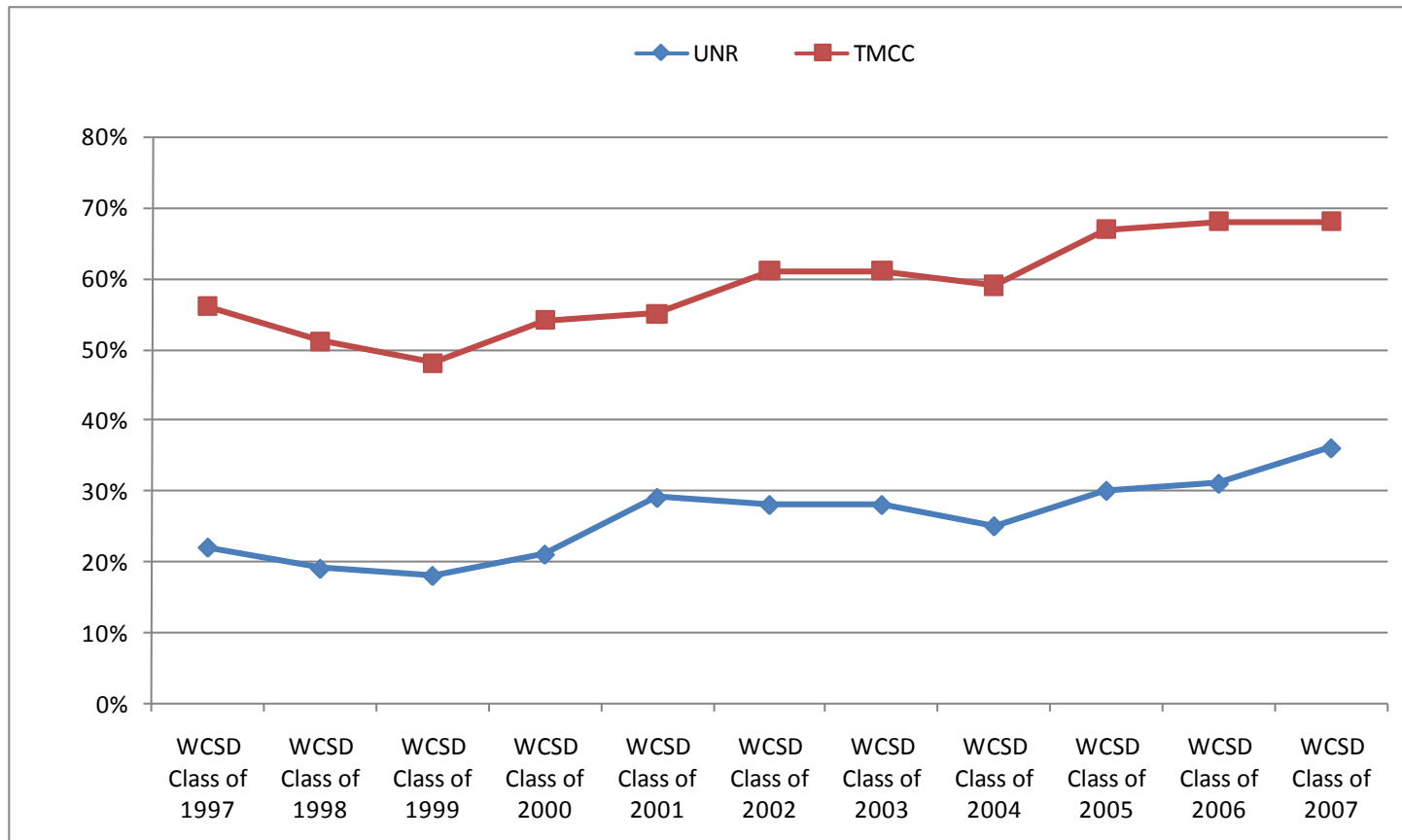


* Not all students who place at the remedial level enroll in English and/or math classes their freshman year. This chart depicts the percentage of high school graduates actually enrolling in remedial classes in Fall 2007. WCSD students are not included in the State (NV) percentages. The State percentages include charter schools; the WCSD percentages do not.

Sources: Nevada System of Higher Education January 2007 Remedial Report, WCSD Data Profile.

REMEDIATION RATES BY INSTITUTION

Percentage of WCSD Graduates Registered in a Remedial Course



Sources: Nevada System of Higher Education January 2007 Remedial Report, WCSD Data Profile.

REMEDICATION BY HIGH SCHOOL - TMCC

Percentage of WCSO Graduates Enrolled in a TMCC Remedial Course

High Schools	Fall 1999	Fall 2000	Fall 2001	Fall 2002	Fall 2003	Fall 2004	Fall 2005	Fall 2006	Fall 2007	
	%	%	%	%	%	%	%	%	%	N
AACT	Not Open	Not Open	Not Open	Not Open	Not Open	Not Open	No Seniors	73%	72%	13
Damonte Ranch	Not Open	Not Open	Not Open	Not Open	Not Open	-	58%	74%	66%	21
Galena	37%	39%	49%	65%	59%	64%	65%	71%	71%	44
Gerlach	-	-	-	-	-	-	-	-	-	-
Hug	52%	63%	68%	59%	80%	65%	89%	77%	71%	24
Incline	-	100%	-	77%	55%	60%	50%	78%	78%	7
McQueen	52%	56%	47%	73%	60%	55%	73%	64%	73%	60
North Valleys	Not Open	Not Open	Not Open	Not Open	71%	66%	61%	74%	76%	66
Reed	54%	52%	59%	69%	63%	71%	66%	71%	76%	77
Reno	32%	55%	47%	62%	47%	46%	68%	58%	55%	32
Spanish Springs	Not Open	Not Open	Not Open	Not Open	71%	63%	79%	80%	76%	71
Sparks	62%	66%	68%	67%	65%	65%	75%	76%	77%	46
TMCC	26%	15%	29%	24%	35%	27%	40%	32%	18%	7
Washoe	53%	57%	62%	62%	57%	45%	67%	69%	53%	20
Wooster	42%	84%	65%	59%	66%	65%	59%	71%	64%	21
Total*	48%	54%	55%	61%	61%	59%	67%	68%	68%	509

* Total includes schools with fewer than 5 students attending TMCC, and is therefore higher than the sum of individual schools.

‘-’ Denotes fewer than 5 students enrolled.

REMEDICATION BY HIGH SCHOOL - UNR

Percentage of WCSD Graduates Enrolled in a UNR Remedial Course

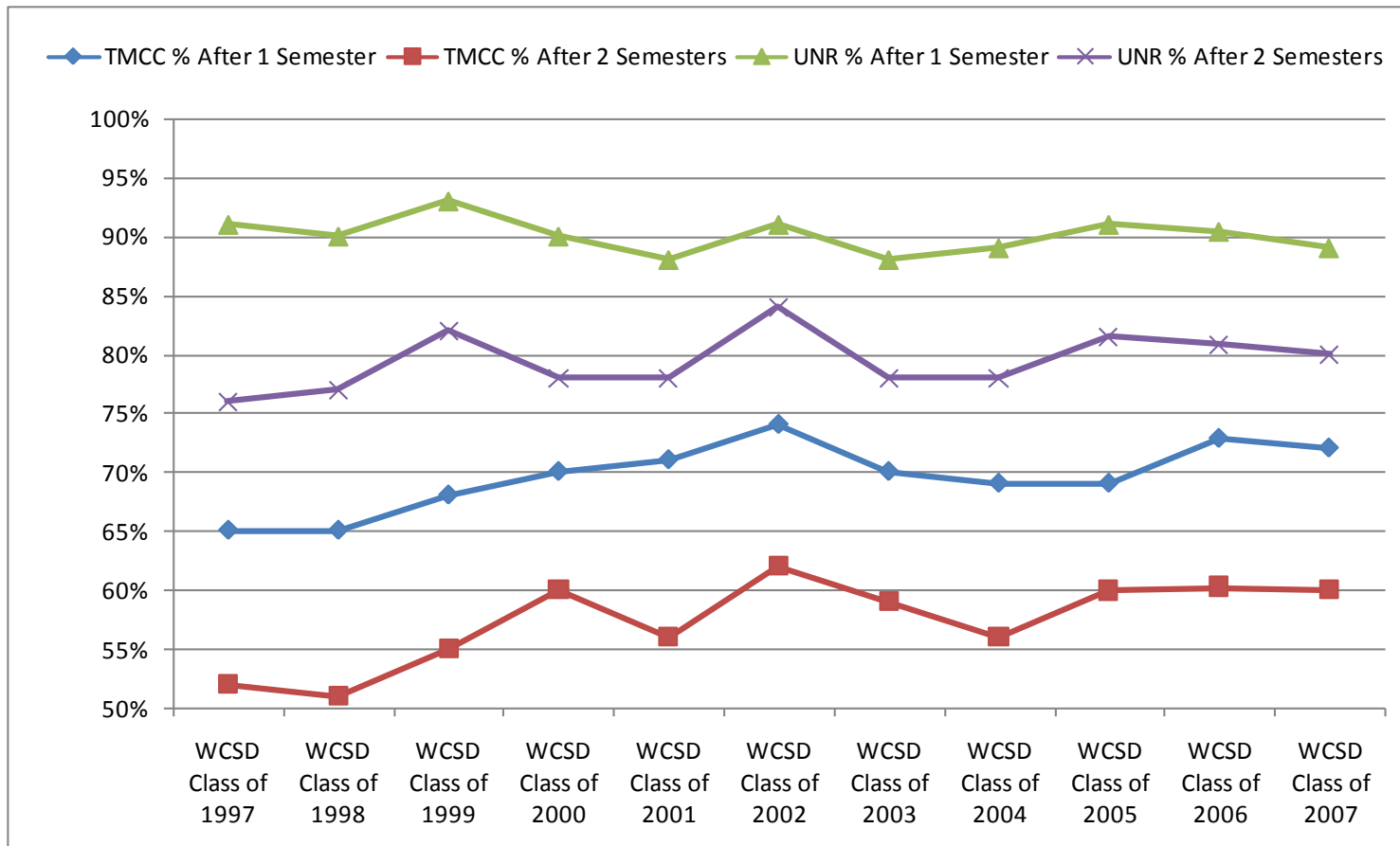
High Schools	Fall 1999	Fall 2000	Fall 2001	Fall 2002	Fall 2003	Fall 2004	Fall 2005	Fall 2006	Fall 2007	
	%	%	%	%	%	%	%	%	%	N
AACT	Not Open	Not Open	Not Open	Not Open	Not Open	Not Open	-	-	-	-
Damonte Ranch	Not Open	Not Open	Not Open	Not Open	Not Open	-	22%	51%	47%	20
Galena	20%	17%	29%	30%	28%	28%	34%	26%	30%	31
Gerlach	-	-	-	-	-	-	-	-	-	-
Hug	21%	28%	49%	47%	52%	43%	55%	61%	65%	17
Incline	-	30%	47%	41%	38%	-	47%	35%	31%	8
McQueen	16%	23%	26%	23%	24%	21%	31%	27%	31%	41
North Valleys	Not Open	Not Open	Not Open	Not Open	30%	20%	28%	29%	32%	17
Reed	12%	20%	30%	28%	28%	28%	28%	28%	32%	42
Reno	20%	23%	26%	27%	21%	17%	27%	34%	34%	49
Spanish Springs	Not Open	Not Open	Not Open	Not Open	43%	31%	24%	36%	45%	42
Sparks	18%	21%	23%	29%	28%	48%	24%	38%	43%	13
TMCC	-	-	-	-	-	-	-	-	-	-
Washoe	-	-	-	-	-	-	-	-	-	-
Wooster	30%	17%	30%	36%	29%	27%	18%	22%	43%	22
Total*	18%	21%	29%	28%	28%	25%	29%	31%	36%	304

* Total includes schools with fewer than 5 students attending UNR, and is therefore higher than the sum of individual schools.

'-' Denotes fewer than 5 students enrolled.

TMCC AND UNR PERSISTENCE RATES

WCS D Graduating Cohorts



Nationally, 73.5% will return after 2 semesters at Universities and 55.8% at Community Colleges (2003, ACT Institutional Data Questionnaire)

PERSISTENCE AT TMCC BY HIGH SCHOOL

Percentage Returning After One Semester

High Schools	Fall 1999	Fall 2000	Fall 2001	Fall 2002	Fall 2003	Fall 2004	Fall 2005	Fall 2006	Fall 2007	
	%	%	%	%	%	%	%	%	%	N
AACT	Not Open	Not Open	Not Open	Not Open	Not Open	Not Open	-	73%	61%	11
Damonte Ranch	Not Open	Not Open	Not Open	Not Open	Not Open	-	68%	65%	63%	20
Galena	80%	65%	80%	77%	71%	77%	77%	71%	66%	41
Gerlach	-	-	-	-	-	-	-	-	-	-
Hug	79%	73%	68%	74%	65%	60%	59%	51%	71%	24
Incline	-	-	78%	62%	55%	50%	60%	67%	78%	7
McQueen	65%	78%	59%	73%	74%	61%	68%	80%	77%	63
North Valleys	Not Open	Not Open	Not Open	Not Open	67%	70%	71%	68%	72%	63
Reed	70%	74%	75%	77%	69%	75%	76%	77%	74%	75
Reno	56%	70%	72%	80%	73%	65%	68%	74%	74%	43
Spanish Springs	Not Open	Not Open	Not Open	Not Open	69%	100%	69%	76%	80%	74
Sparks	65%	72%	82%	73%	71%	45%	65%	71%	67%	40
TMCC	81%	66%	75%	75%	73%	79%	71%	77%	76%	29
Washoe	44%	61%	48%	57%	65%	61%	42%	72%	47%	18
Wooster	67%	65%	65%	73%	74%	72%	71%	73%	82%	27
Total*	68%	70%	71%	74%	70%	69%	69%	73%	72%	535

* Total numbers include schools with fewer than five students attending TMCC, and are therefore higher than the sum of individual schools.

'-' Denotes fewer than 5 students attended TMCC

PERSISTENCE AT UNR BY HIGH SCHOOL

Percentage Returning After One Semester

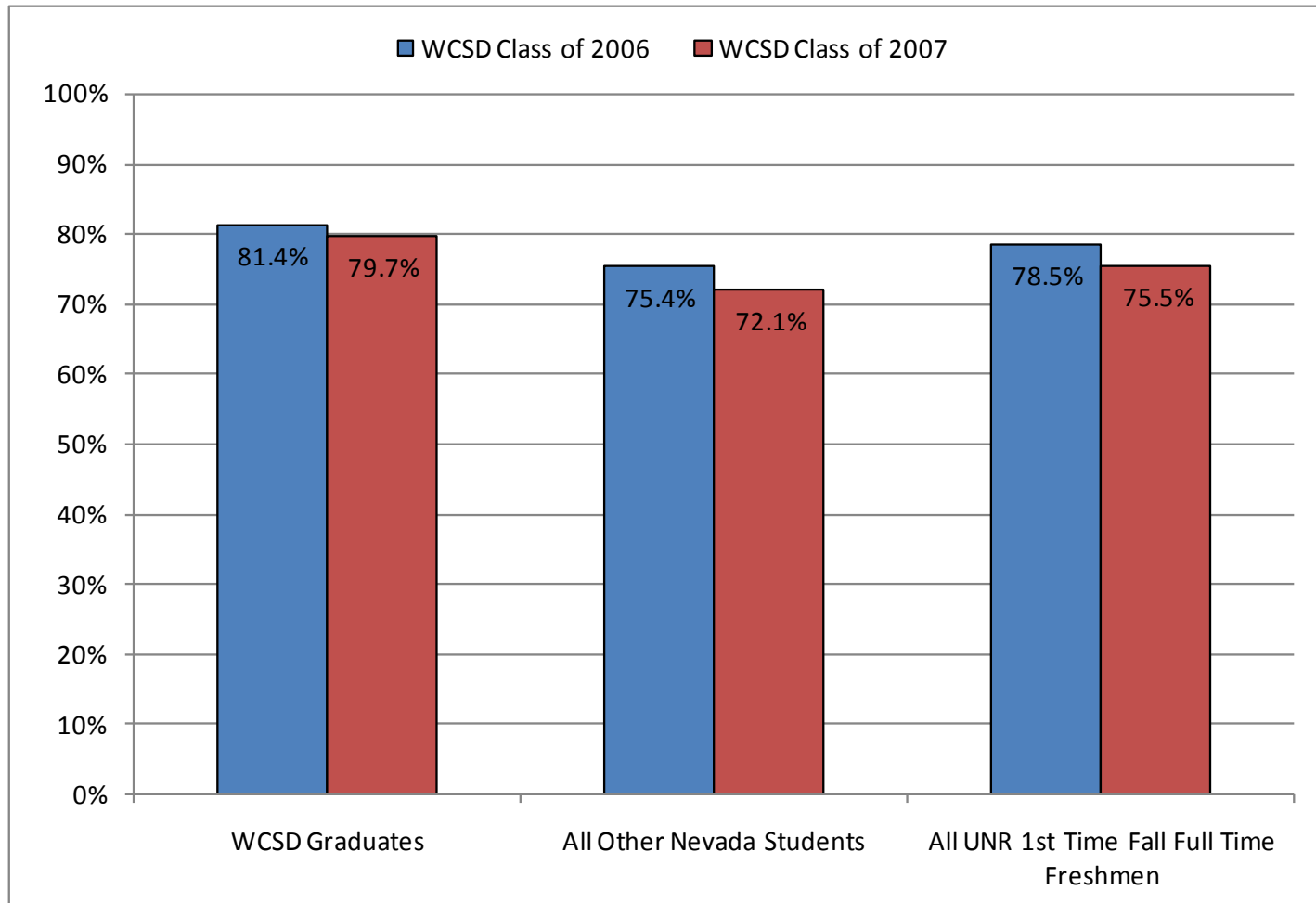
High Schools	Fall 1999	Fall 2000	Fall 2001	Fall 2002	Fall 2003	Fall 2004	Fall 2005	Fall 2006	Fall 2007	
	%	%	%	%	%	%	%	%	%	N
AACT	Not Open	Not Open	Not Open	Not Open	Not Open	Not Open	-	-	-	-
Damonte Ranch	Not Open	Not Open	Not Open	Not Open	Not Open	-	44%	79%	83%	34
Galena	97%	90%	92%	90%	89%	91%	89%	95%	95%	103
Gerlach	-	-	-	-	-	-	-	-	-	-
Hug	94%	81%	84%	88%	84%	87%	90%	80%	80%	20
Incline	95%	95%	93%	71%	77%	100%	100%	86%	96%	23
McQueen	93%	91%	95%	95%	92%	90%	95%	92%	93%	124
North Valleys	Not Open	Not Open	Not Open	Not Open	82%	87%	86%	87%	80%	43
Reed	95%	89%	81%	90%	87%	81%	91%	90%	86%	114
Reno	94%	91%	88%	96%	90%	95%	90%	95%	93%	138
Spanish Springs	Not Open	Not Open	Not Open	Not Open	86%	84%	89%	85%	86%	81
Sparks	86%	88%	85%	92%	90%	89%	83%	94%	90%	26
TMCC	83%	92%	89%	81%	78%	89%	67%	88%	86%	12
Washoe	-	-	-	-	-	-	-	-	-	-
Wooster	92%	93%	87%	86%	93%	85%	93%	89%	88%	44
Total*	93%	90%	88%	91%	88%	89%	91%	90%	89%	762

* Total numbers include schools with fewer than five students attending TMCC, and are therefore higher than the sum of individual schools.

'-' Denotes fewer than 5 students attended TMCC

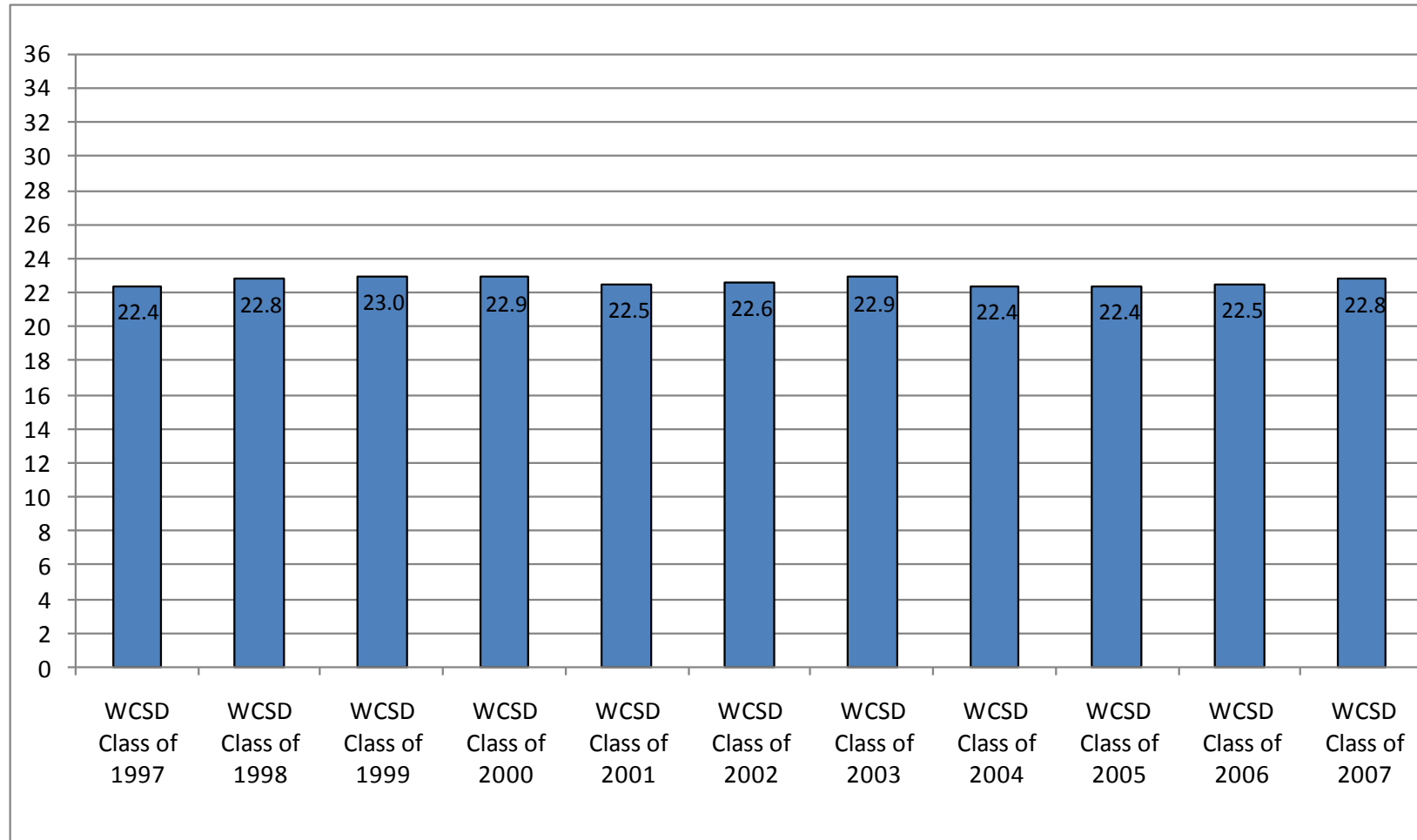
PERSISTENCE AT UNR

Percentage Returning After Two Semesters



ACT SCORES - UNR

ACT Composite Scores of WCSD Graduating Cohorts Attending UNR



The maximum composite ACT score is 36.

AVERAGE ACT SCORES BY HIGH SCHOOL

WCSD Graduating Cohorts Attending UNR

High Schools	WCSD Class of 1999	WCSD Class of 2000	WCSD Class of 2001	WCSD Class of 2002	WCSD Class of 2003	WCSD Class of 2004	WCSD Class of 2005	WCSD Class of 2006	WCSD Class of 2007	
	Score	Score	Score	Score	Score	Score	Score	Score	Score	N
AACT	Not Open	Not Open	Not Open	Not Open	Not Open	Not Open	Not Open	-	-	-
Damonte Ranch	Not Open	Not Open	Not Open	Not Open	Not Open	-	22.0	20.8	24.3	10
Galena	23.0	23.8	23.5	22.9	22.7	22.8	22.8	22.8	23.5	66
Gerlach	-	-	-	-	-	-	20.0	-	-	-
Hug	22.3	21.7	20.3	22.0	20.1	21.7	20.0	19.8	18.6	19
Incline	21.9	22.5	19.5	20.8	22.0	25.0	23.7	23.1	21.2	13
McQueen	24.5	23.5	22.9	23.0	23.5	23.1	22.7	23.1	23.4	101
North Valleys	Not Open	Not Open	Not Open	Not Open	21.8	22.3	22.1	23.3	23.1	38
Reed	23.3	23.2	22.0	22.6	23.2	21.6	22.1	22.5	23.2	101
Reno	21.9	22.1	23.1	23.4	23.7	22.8	22.7	22.2	22.9	78
Spanish Springs	Not Open	Not Open	Not Open	Not Open	21.5	20.7	22.6	21.6	21.4	59
Sparks	22.3	21.6	22.0	21.6	21.6	21.5	21.5	21.8	21.6	28
TMCC	23.8	23.2	23.9	22.5	23.1	23.2	23.8	23.8	25.4	5
Washoe	-	-	-	-	-	-	21.0	-	-	-
Wooster	21.4	22.7	23.4	22.4	23.0	23.0	23.4	21.5	22.6	12
Avg Score*	23.0	22.9	22.5	22.6	22.9	22.4	22.4	22.5	22.8**	531**

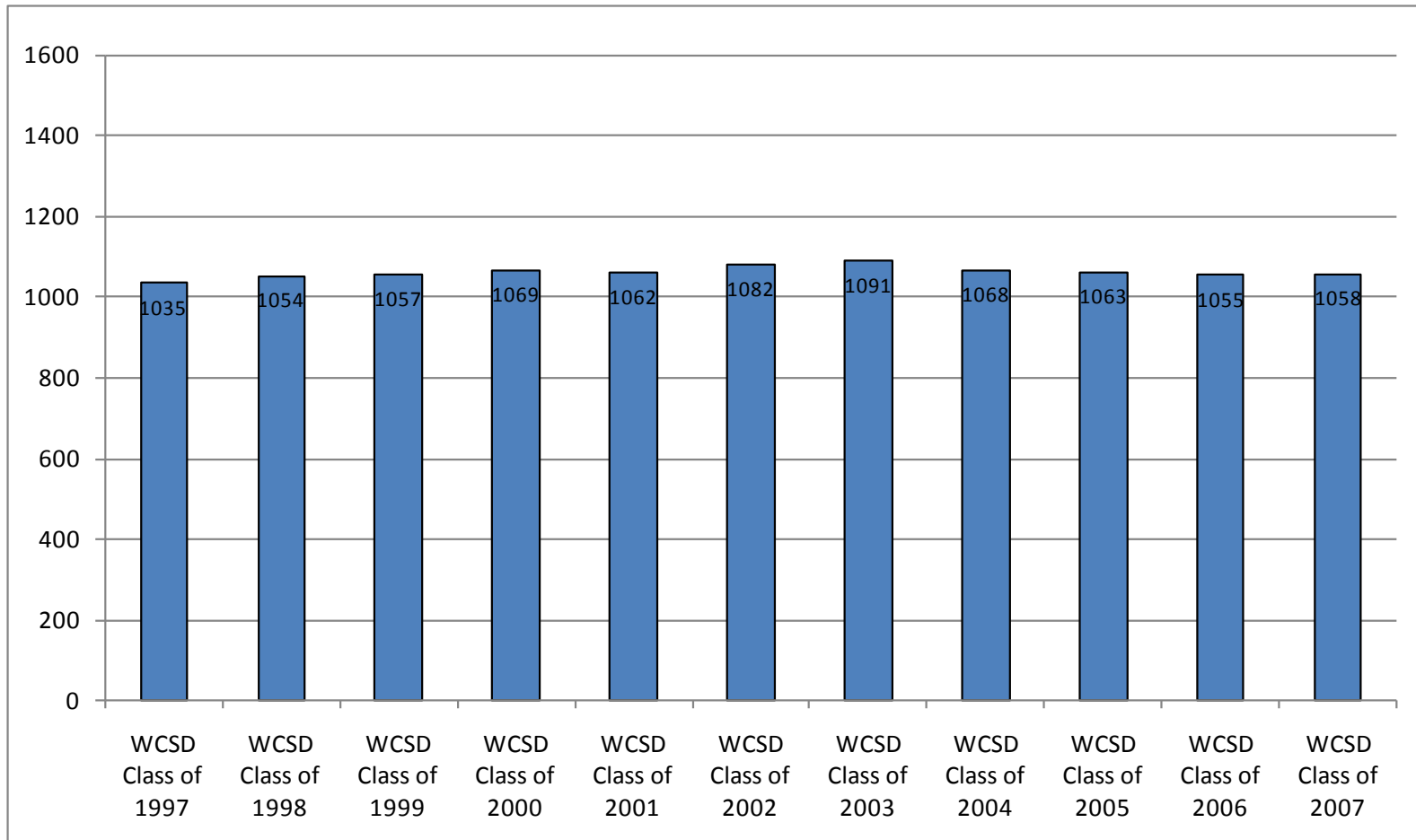
* Weighted mean

** Total includes schools with fewer than 5 students attending UNR, and is therefore higher than the sum of individual schools.

'-' Denotes fewer than 5 students enrolled.

SAT SCORES - UNR

Combined Verbal and Math SAT Scores of WCSD Graduating Cohorts Attending UNR



The maximum combined SAT score 1600.

AVERAGE SAT SCORES BY HIGH SCHOOL

WCSD Graduating Cohorts Attending UNR

High Schools	WCSD Class of 1999	WCSD Class of 2000	WCSD Class of 2001	WCSD Class of 2002	WCSD Class of 2003	WCSD Class of 2004	WCSD Class of 2005	WCSD Class of 2006	WCSD Class of 2007	
	Score	Score	Score	Score	Score	Score	Score	Score	Score	N
AACT	Not Open	Not Open	Not Open	Not Open	Not Open	Not Open	Not Open	-	-	-
Damonte Ranch	Not Open	Not Open	Not Open	Not Open	Not Open	-	964	1013	1060	35
Galena	1065	1099	1061	1062	1043	1072	1066	1088	1082	85
Gerlach	-	-	-	-	-	-	900	-	-	-
Hug	1095	1025	1053	992	1077	1077	978	896	888	19
Incline	1038	1008	1017	999	1034	1004	1051	1126	998	21
McQueen	1102	115	1078	1113	1158	1122	1069	1080	1076	92
North Valleys	Not Open	Not Open	Not Open	Not Open	1035	1038	1061	1039	1037	39
Reed	1038	1058	1030	1058	1103	1055	1051	1065	1056	90
Reno	1039	1053	1076	1095	1112	1071	1068	1053	1089	128
Spanish Springs	Not Open	Not Open	Not Open	Not Open	1024	1023	1070	1038	1031	73
Sparks	115	1030	1068	1127	1019	1041	1030	892	943	12
TMCC	-	1061	1133	1155	1140	1040	1132	1033	1132	11
Washoe	-	-	-	-	-	-	-	-	-	-
Wooster	1018	1039	1064	1098	1079	1064	1094	1047	1066	42
Avg Score*	1057	1069	1062	1082	1091	1068	1063	1055	1058**	649**

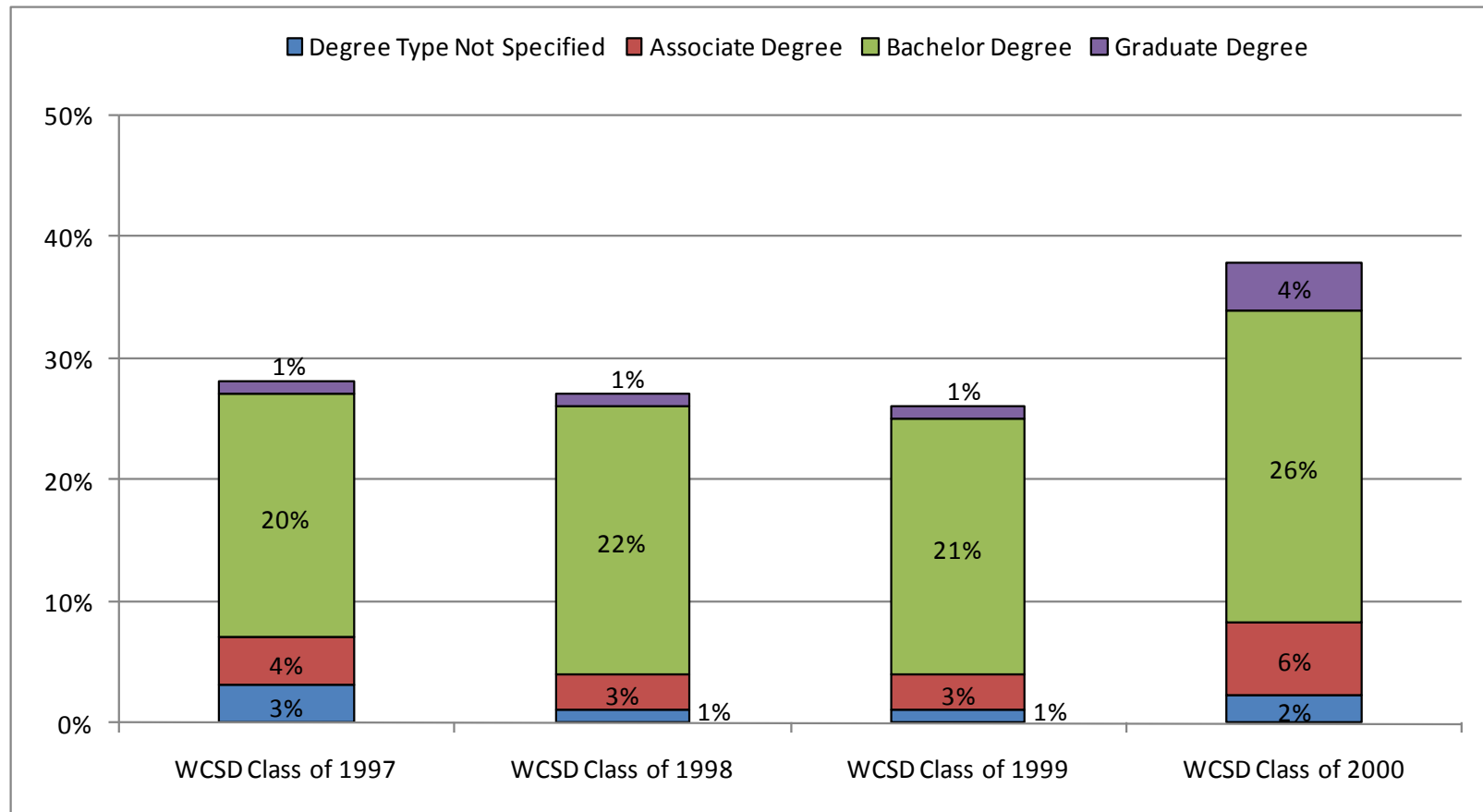
* Weighted mean

** Total includes schools with fewer than 5 students attending UNR, and is therefore higher than the sum of individual schools.

'-' Denotes fewer than 5 students enrolled.

COLLEGE SUCCESS OF WCSD GRADUATES

Percentage of Students Awarded College Degrees*



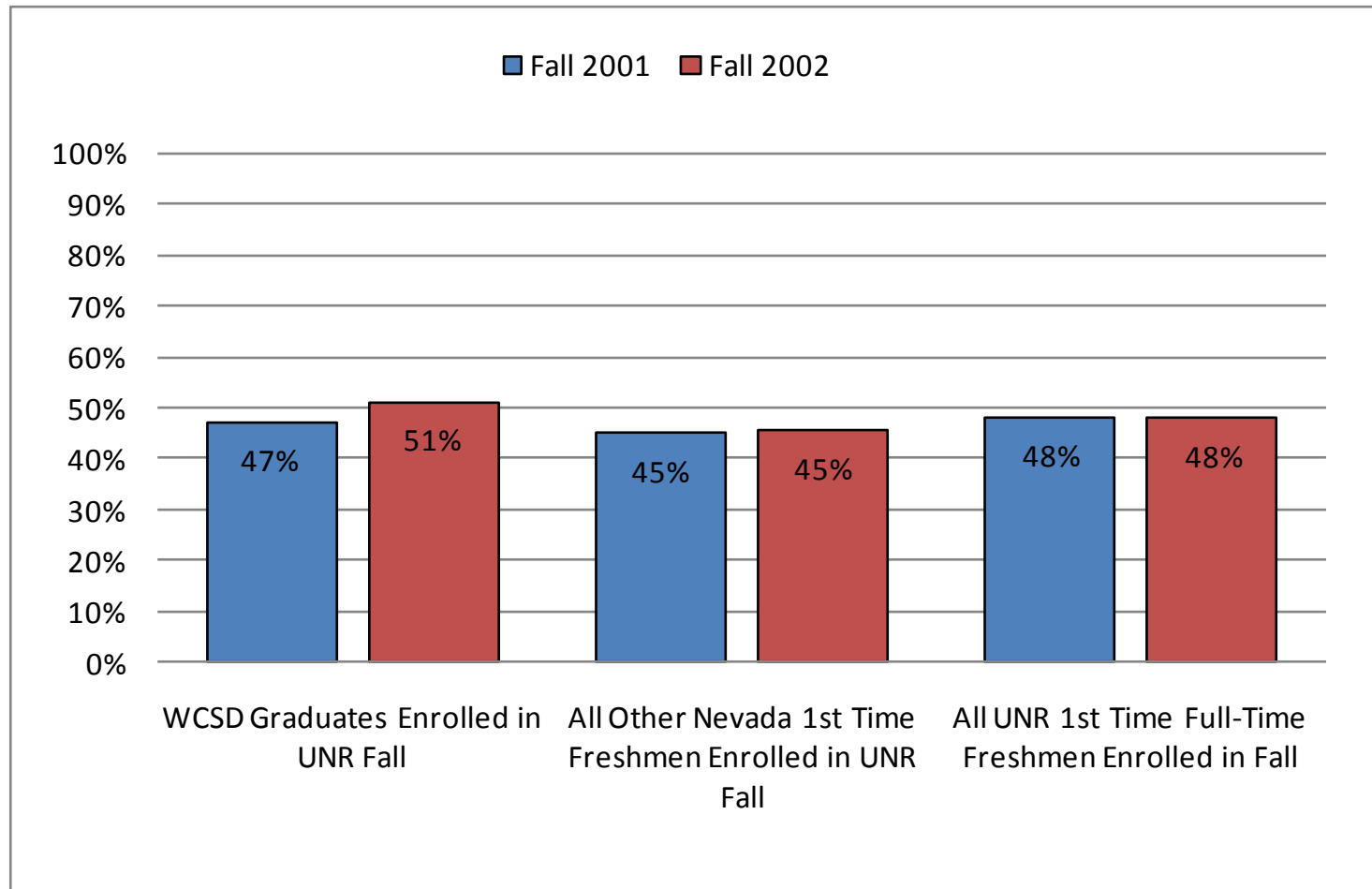
* For WCSD Class of 1997, college degrees earned by March 2005; WCSD Class of 1998, college degrees earned by March 2006; WCSD Class of 1999, college degrees earned by March 2007; WCSD Class of 2000, college degrees earned by March 2008

To avoid artificially inflating the number of degrees, only the highest degree obtained by an individual was counted.

Source: National Student Clearinghouse Student Tracker Service

COLLEGE SUCCESS OF WCSD GRADUATES AT UNR

Percentage of Students Awarded College Degrees Within Six Years of Initial College Enrollment



The End